

**NOTICE**

This Revision 7 updates the front matter as well as Chapter 62.

Please incorporate these updates into the Illustrated Parts Breakdown Manual in accordance with the Log of Pages (attached).

Bell Helicopter would also like to thank its Customers for providing us with Customer Feedback information. This information is very much appreciated and allows us to improve the quality of our manuals with each revision.

**Bell Helicopter**

A Textron Company

POST OFFICE BOX 482 • FORT WORTH, TEXAS 76101

**1 DECEMBER 1996**  
**REVISION 7 — 25 SEPTEMBER 2009**



# **Bell** MODEL **206L** SERIES



FOR MODELS 206L, 206L-1, 206L-3, AND 206L-4

## **ILLUSTRATED PARTS BREAKDOWN MANUAL**

### **NOTICE**

The instructions set forth in this manual, as supplemented or modified by Alert Service Bulletins (ASB) or other directions issued by Bell Helicopter Textron Inc. and Airworthiness Directives (AD) issued by the applicable regulatory agencies, shall be strictly followed.

COPYRIGHT NOTICE  
COPYRIGHT 2009  
BELL © HELICOPTER TEXTRON INC.  
AND BELL HELICOPTER TEXTRON  
CANADA LTD.  
ALL RIGHTS RESERVED

**Bell** helicopter

A Textron Company

POST OFFICE BOX 482 • FORT WORTH, TEXAS 76101

**1 DECEMBER 1996  
REVISION 7 — 25 SEPTEMBER 2009**

### **PROPRIETARY RIGHTS NOTICE**

These data are proprietary to Bell Helicopter Textron Inc. Disclosure, reproduction, or use of these data for any purpose other than helicopter operation or maintenance is forbidden without prior written authorization from Bell Helicopter Textron Inc.

### **DESTINATION CONTROL STATEMENT**

These commodities, technology, or software were exported from the United States in accordance with the Export Administration Regulations (EAR). Diversion contrary to U.S. law prohibited. The data contained in this manual are classified as ECCN EAR99.

Additional copies of this publication may be obtained by contacting:  
Commercial Publication Distribution Center  
Bell Helicopter Textron Inc.  
P. O. Box 482  
Fort Worth, Texas 76101-0482

## LOG OF REVISIONS

Insert latest revision pages and dispose of superseded ones.

On a revised page, the text and/or illustration affected by the latest revision is shown by a vertical line. A revised page with only a vertical line next to the page number indicates that text has shifted or that non-technical correction(s) were made on that page.

Original ..... 0 ..... 1 DEC 96	Revision ..... 3 ..... 15 MAR 06	Revision ..... 6 ..... 04 SEP 09
Revision ..... 1 ..... 2 FEB 98	Revision ..... 4 ..... 12 JUN 07	Revision ..... 7 ..... 25 SEP 09
Revision ..... 2 ..... 8 MAR 99	Revision ..... 5 ..... 10 JUL 09	

## LOG OF PAGES

Page No.	Rev No.	Page No.	Rev No.	Page No.	Rev No.
<b>VOLUME 1</b>					
Cover .....	5	2 – 4 .....	0	67/68 .....	1
Title .....	7	5/6 .....	0	69 .....	1
PN .....	5	7 .....	0	70 .....	0
Warning .....	5	8 – 10 .....	1	71/72 .....	1
CSS .....	5	11/12 .....	1	73 .....	1
A – D .....	7	13 .....	1	74 – 76 .....	0
Help .....	5	14 .....	0	77/78 .....	0
Customer Feedback .....	5	15 – 18 .....	1	79 – 82 .....	0
Helicopter Sale Notice .....	5	19/20 .....	1	83/84 .....	0
Warranty .....	5	21 – 28 .....	1	85 – 88 .....	0
i/ii .....	5	28A/28B .....	1	89/90 .....	0
		29 – 34 .....	1		
		35/36 .....	1	Chapter 26	
Chapter 1				1 .....	0
1/2 .....	2	Chapter 25		2 .....	1
3 – 4 .....	0	1 .....	1	3/4 .....	1
5 – 8 .....	2	2 – 3 .....	0		
9 – 12 .....	0	4 – 7 .....	1	Chapter 28	
		8 – 9 .....	0	1 – 3 .....	1
Chapter 8		10 – 12 .....	1	4 .....	0
1 – 6 .....	0	13 – 17 .....	0	5 – 6 .....	1
		18 .....	1	7/8 .....	1
Chapter 9		19/20 .....	0	9 .....	1
1 – 2 .....	0	21 .....	0	10 – 12 .....	0
3 – 4 .....	1	22 – 24 .....	1	13/14 .....	0
		25/26 .....	1	15 .....	0
Chapter 10		27 .....	1	16 – 18 .....	1
1 – 4 .....	0	28 – 35 .....	0	19 – 30 .....	0
5/6 .....	0	36 – 39 .....	1	31/32 .....	1
		40 – 45 .....	0	33 .....	1
Chapter 11		46 – 53 .....	1	34 .....	0
1 – 4 .....	0	54 .....	0	35/36 .....	1
		55/56 .....	0	37 – 40 .....	1
Chapter 21		57 – 63 .....	0	41/42 .....	1
1 .....	1	64 – 66 .....	1	43 – 44 .....	0

## LOG OF PAGES (CONT)

Page No.	Rev No.	Page No.	Rev No.	Page No.	Rev No.
45 – 46.....	1	8 – 10 .....	0	182 – 188.....	0
47/48.....	1	11/12 .....	1	Chapter 62	
49 – 52.....	1	13 – 30 .....	1	1 – 2.....	5
53/54.....	1	31/32 .....	1	3 – 7.....	7
55 – 61.....	0	33 – 36 .....	1	8 – 14.....	6
62 – 64.....	1	37/38 .....	1	15 – 20.....	5
65/66.....	1	39 – 40 .....	1	Chapter 63	
Chapter 29		41/42 .....	1	1.....	1
1 – 4.....	5	43 – 51 .....	1	2.....	0
5/6.....	5	52 – 54 .....	0	3 – 5.....	1
7 – 10.....	5	55/56 .....	0	6.....	0
11/12.....	5	57 – 62 .....	0	7/8.....	0
13 – 18.....	5	63/64 .....	0	9 – 15.....	1
Chapter 32		65 .....	0	16 – 17 Deleted .....	0
1 – 6.....	3	66 – 69 .....	1	18 – 26.....	1
7/8.....	3	70 – 73 .....	0	26A/26B .....	1
9 – 24.....	3	74 – 83 .....	1	27 – 29.....	1
25/26.....	3	84 – 90 .....	0	30.....	0
27 – 42.....	3	91/92 .....	0	31/32.....	0
43/44.....	3	93 – 100 .....	0	33 – 34.....	0
Chapter 52		101/102 .....	0	35 – 41.....	1
1.....	1	103 – 104 .....	0	42.....	0
2 – 5.....	0	105/106 .....	0	43/44.....	0
6 – 11.....	1	107 – 108 .....	0	45 – 46.....	0
12 – 14.....	0	109/110 .....	0	47.....	1
15/16.....	0	111 – 113 .....	0	48 – 55.....	0
17.....	0	114 – 117.....	1	56 – 68.....	1
18 – 22.....	1	118 .....	0	69/70.....	1
23/24.....	1	119/120 .....	0	71.....	1
25.....	1	121 – 122 .....	0	72.....	0
26.....	0	123/124 .....	0	73/74.....	0
27/28.....	0	125 .....	0	75 – 78.....	0
29.....	0	126 – 131 .....	1	79/80.....	1
30 – 35.....	1	132 – 133 Deleted.....	1	81.....	0
36 – 37.....	0	134 – 135 .....	0	82.....	1
38.....	1	136 – 137 .....	1	83/84.....	1
39/40.....	1	138 – 141 .....	0	Chapter 64	
41.....	0	142 – 144 .....	1	1 – 4.....	0
42.....	1	145/146 .....	1	5/6.....	0
43/44.....	1	147 – 151 .....	1	7 – 8.....	0
45.....	1	152 – 153 .....	0	9 – 13.....	1
46 – 50.....	0	154 .....	1	14 – 15.....	0
Chapter 53		154A/154B .....	1	16.....	1
1/2.....	1	155 – 157 .....	1	17/18.....	1
3 – 7.....	1	158 – 161 .....	0	19.....	1
		162 – 167 .....	1	20.....	0
		168 – 172 .....	4		
		173/174 .....	4		
		175 – 181 .....	4		

**LOG OF PAGES (CONT)**

<b>Page No.</b>	<b>Rev No.</b>	<b>Page No.</b>	<b>Rev No.</b>	<b>Page No.</b>	<b>Rev No.</b>
21/22 .....	0	41/42.....	1	Chapter 95	
23 – 24 .....	0	43 – 44.....	1	1 – 16.....	1
25/26 .....	0	45/46.....	1	16A/16B .....	1
27 – 28 .....	0	47.....	1	17 .....	1
29/30 .....	0	48 – 49.....	0	18 – 24 .....	0
Chapter 65		50.....	1	25/26 .....	0
1 .....	0	51/52.....	1	27 – 28 .....	0
2 .....	1	53 – 59.....	1	29/30 .....	0
3 .....	0	60.....	0	31 – 35 .....	0
4 – 14 .....	1	61 – 64.....	1	36 .....	1
15/16 .....	1	64A/64B.....	1	37/38 .....	1
Chapter 67		65 – 68.....	1	Chapter 96	
1 .....	0	69/70.....	1	1/2 .....	1
2 – 4 .....	1	71 – 74.....	1	3 .....	1
5/6 .....	1	74A/74B.....	1	4 – 11 .....	0
7 – 15.....	1	75 – 78.....	1	12 – 14 .....	1
16 – 18.....	0	78A/78B.....	1	15/16.....	1
19/20 .....	0	79.....	1	17 – 19.....	1
21 .....	0	80.....	0	20 – 25.....	0
22 – 24 .....	1	81/82.....	1	26 – 27.....	1
25/26 .....	1	83 – 87.....	1	28 – 30.....	0
27 – 28 .....	1	88.....	0	31/32.....	0
29/30 .....	1	89/90.....	1	33 – 34.....	0
31 .....	1	91 – 97.....	1	35 – 50.....	1
32 – 34 .....	0	98.....	0	51/52.....	1
35/36.....	0	99/100.....	0	53.....	1
37 – 44 .....	0	Chapter 76		54.....	0
45/46.....	1	1 – 2.....	0	55/56.....	0
47 – 56.....	1	3/4.....	0	57 – 58.....	0
57/58.....	1	5 – 6.....	0	59 – 60.....	1
59 – 64 .....	1	7 – 9.....	1	61/62.....	1
Chapter 71		10 – 12.....	0	63.....	1
1/2 .....	1	13/14.....	0	64 – 66.....	0
3 – 8 .....	1	15.....	0	67/68.....	0
9/10 .....	1	16.....	1	69.....	0
11 – 12 .....	1	17/18.....	1	70 .....	1
13/14.....	1	19.....	1	71 .....	0
15 – 24.....	1	20 – 22.....	0	72.....	1
24A/24B .....	1	23/24.....	0	73/74 .....	1
25 – 26 .....	1	Chapter 79		75.....	1
27/28 .....	1	1 – 4.....	0	76 – 84.....	0
29 – 30 .....	1	5/6.....	0	85/86.....	0
31/32.....	1	7 – 10.....	0	87 – 89.....	0
33 – 36.....	1	11/12.....	0	90.....	1
37/38.....	1	13 – 17.....	0	91/92.....	1
39 – 40 .....	1	18 – 22.....	1	93.....	1
		23/24.....	1	94 – 100.....	0
				101 – 107.....	1

**LOG OF PAGES (CONT)**

<b>Page No.</b>	<b>Rev No.</b>	<b>Page No.</b>	<b>Rev No.</b>	<b>Page No.</b>	<b>Rev No.</b>
108 – 113.....	0	23/24 .....	1	51 – 53.....	0
114 – 119.....	1	25.....	1	54.....	1
120 – 124.....	0	26.....	0	54A/54B.....	1
125 – 127.....	1	27/28 .....	1	55 – 62.....	1
128.....	0	29.....	1	63/64.....	1
129 – 130.....	1	30 – 32 .....	0	65.....	1
131/132.....	1	33/34 .....	0	66.....	0
133.....	1	35 – 38 .....	0	67/68.....	0
134 – 136.....	0			69.....	0
137/138.....	0	Chapter 99		70.....	1
139 – 140.....	0	1.....	3	71/72.....	1
141 – 149.....	1	2 – 6 .....	0	73 – 74.....	1
150.....	0	7/8 .....	0	75/76.....	1
151/152.....	0	9 – 12 .....	0	77.....	1
153 – 154.....	0	13/14 .....	0	78 – 83.....	0
155.....	1	15.....	0	84 – 87.....	1
156.....	0	16.....	1	88 – 107 Deleted .....	1
157/158.....	0	17.....	0	108 – 110.....	0
		18 – 21 .....	1	111/112 .....	0
Chapter 97		22.....	0	113 – 114 .....	0
1 – 4.....	0	23 – 28 .....	1	115/116 .....	0
5/6.....	0	29/30 .....	1	117.....	0
7 – 10.....	0	31 – 35 .....	1	118 – 124.....	1
11/12.....	0	36 – 38 .....	3	125/126.....	1
13.....	0	39/40 .....	3		
14.....	1	41 – 45 .....	3	Index of Part Numbers	
15.....	0	45A – 45K .....	3	1 – 206.....	1
16 – 20.....	1	45L/45M .....	3		
20A/20B.....	1	45N.....	3	Index of REF DES	
21.....	1	46 – 48 .....	0	1 – 10.....	1
22.....	0	49/50 .....	0		

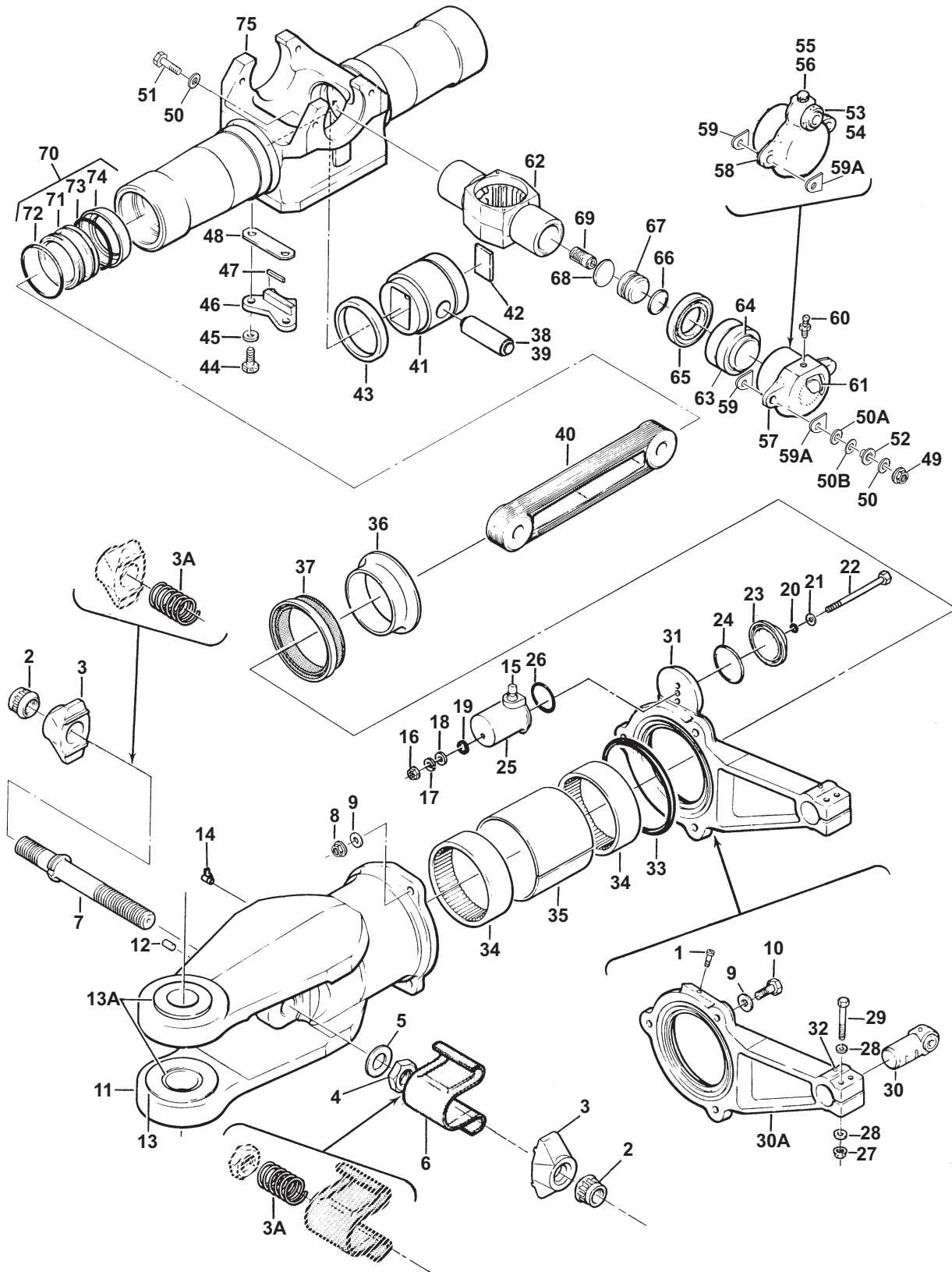
(1) INDEX NUMBER	(2) PART NUMBER	(3) ITEM NAME	(4) UNIT PER ASSY	(5) A V A I L	(6) U O C
		<b>Figure 62-1. Hub and Blade Installation, Main Rotor</b>			
	206-011-001-029	HUB AND BLADE INSTL, MAIN ROTOR (S/N 45004 THRU 45058).	1	NP	
	206-011-001-037	HUB AND BLADE INSTL, MAIN ROTOR (S/N 45059 THRU 45779, 46601 THRU 46617) . . . . .	1	NP	
	206-011-001-147	HUB AND BLADE INSTL, MAIN ROTOR (S/N 51001 THRU 51025).	1	NP	
	206-011-001-151	HUB AND BLADE INSTL, MAIN ROTOR (S/N 45780 THRU 45790, 51026 THRU 51230) . . . . .	1	NP	
	206-011-001-159	HUB AND BLADE INSTL, MAIN ROTOR (S/N 51231 THRU 51612, 52001 THRU SUB) . . . . .	1	NP	
1	AN4H5A	. BOLT . . . . .	1	SP	
2	AN960-10	. WASHER (REPLACED BY NAS1149F0363P) . . . . .	1	NP	
2	NAS1149F0363P	. WASHER (REPLACES AN960-10) . . . . .	1	SP	
3	206-010-195-001	. LOCK . . . . .	1	SP	
4	MS24694-S55	. SCREW . . . . .	2	SP	
5	206-010-198-001	. NUT (REPLACED BY 206-011-152-101) . . . . .	1	NP	ABC
5	206-011-152-101	. NUT (REPLACES 206-010-198-001) (REPLACED BY 206-011-152-103) . . . . .	1	NP	
5	206-011-152-103	. NUT (REPLACES 206-011-152-101) . . . . .	1	SP	
6	MS17825-5	. NUT (REPLACED BY MS14144L5) . . . . .	2	P	
6	MS14144L5	. NUT (REPLACES MS17825-5) . . . . .	2	SP	
7	AN960-516L	. WASHER (REPLACED BY NAS1149F0532P) . . . . .	6	NP	
7	NAS1149F0532P	. WASHER (REPLACES AN960-516L) . . . . .	6	SP	
8	NAS1305-19D	. BOLT (REPLACED BY NAS6605D19) . . . . .	2	NP	
8	NAS6605D19	. BOLT (REPLACES NAS1305-19D) (REPLACED BY 20-057-5-18D)	2	SP	
8	20-057-5-18D	. BOLT (REPLACES NAS6605D19) . . . . .	2	SP	
9	206-010-003-007	. CONE SET . . . . .	1	SP	
10	206-011-117-003	. RESTRAINT ASSY, FLAP . . . . .	1	NP	
11	NAS679A5	. NUT (REPLACED BY MS21042L5) . . . . .	2	NP	
11	MS21042L5	. NUT, SELF-LOCKING (REPLACES NAS679A5) . . . . .	2	SP	
12	AN960-516	. WASHER (REPLACED BY NAS1149F0563P) . . . . .	18	NP	
12	NAS1149F0563P	. WASHER (REPLACES AN960-516) . . . . .	18	SP	
13	AN970-5	. WASHER . . . . .	16	SP	
14	AN960-616	. WASHER (REPLACED BY NAS1149F0663P) . . . . .	2	NP	
14	NAS1149F0663P	. WASHER (REPLACES AN960-616) . . . . .	2	SP	
15	AN44-15	. EYEBOLT . . . . .	2	SP	
16	206-011-116-001	. SPRING . . . . .	2	SP	
17	NAS679A4	. NUT (REPLACED BY MS21042L4) . . . . .	2	P	
17	MS21042L4	. NUT (REPLACES NAS679A4) . . . . .	2	SP	
18	AN960-416L	. WASHER (REPLACED BY NAS1149F0432P) . . . . .	2	NP	
18	NAS1149F0432P	. WASHER (REPLACES AN960-416L) . . . . .	2	SP	
19	NAS464-4A17	. BOLT . . . . .	2	SP	
20	206-011-139-001	. ARM ASSY . . . . .	2	SP	
21	MS27644-4	. BEARING . . . . .	1	SP	
22	AN42B-3	. EYEBOLT . . . . .	2	SP	
23	AN960-10	. WASHER (REPLACED BY NAS1149F0363P) . . . . .	6	NP	
23	NAS1149F0363P	. WASHER (REPLACES AN960-10) . . . . .	6	SP	
24	206-010-191-001	. SUPPORT (REPLACED BY 206-010-191-103)	1	SP	
24	206-010-191-103	. SUPPORT (REPLACES 206-010-191-001) . . . . .	1	SP	
25	MS21042L4	. NUT . . . . .	4	SP	CDE
26	AN960C416L	. WASHER (REPLACED BY NAS1149C0432R) . . . . .	2	NP	CDE
26	NAS1149C0432R	. WASHER (REPLACES AN960C416L) . . . . .	2	SP	
27	206-011-158-101	. RETAINER, HUB BALANCE . . . . .	2	SP	CDE
28	206-011-157-101	. WEIGHT (NOTE 1) . . . . .	5	SP	CDE
29	206-011-157-103	. WEIGHT (NOTE 1) . . . . .	5	SP	CDE
30	206-011-157-105	. WEIGHT (NOTE 1) . . . . .	8	SP	CDE
	206-011-001-031	. HUB AND BLADE ASSY, MAIN ROTOR . . . . .	1	NP	A
	206-011-001-035	. HUB AND BLADE ASSY, MAIN ROTOR . . . . .	1	NP	F
	206-011-001-143	. HUB AND BLADE ASSY, MAIN ROTOR . . . . .	1	NP	J
	206-011-001-149	. HUB AND BLADE ASSY, MAIN ROTOR . . . . .	1	NP	C

(1) INDEX NUMBER	(2) PART NUMBER	(3) ITEM NAME	(4) UNIT PER ASSY	(5) A V A I L	(6) U O C
		<b>Figure 62-1. Hub and Blade Installation, Main Rotor (Cont'd)</b>			
	206-011-001-153	. HUB AND BLADE ASSY, MAIN ROTOR	1	NP	H
	206-011-001-155	. HUB AND BLADE ASSY, MAIN ROTOR	1	NP	G
	206-011-001-157	. HUB AND BLADE ASSY, MAIN ROTOR	1	NP	E
31	206-011-100-009	. . HUB ASSY, MAIN ROTOR (SEE FIG. 62-2 FOR BALANCE OF BREAKDOWN)	1	NP	A
31	206-011-100-019	. . HUB ASSY, MAIN ROTOR (SEE FIG. 62-2 FOR BALANCE OF BREAKDOWN) (REPLACED BY 206-011-100-025, -129, -135, -139, -147, -151, -159 AND -105)	1	NP	F
31	206-011-100-025	. . HUB ASSY, MAIN ROTOR (SEE FIG. 62-2 FOR BALANCE OF BREAKDOWN) (REPLACES 206-011-100-019) (REPLACED BY 206-011-100-129, -135, -139, -147, -151, -159 AND -105)	1	NP	F
31	206-011-100-129	. . HUB ASSY, MAIN ROTOR (SEE FIG. 62-2 FOR BALANCE OF BREAKDOWN) (REPLACES 206-011-100-019 AND -025) (REPLACED BY 206-011-100-139, -147, -151, -159, -105 AND -135)	1	NP	FJ
31	206-011-100-135	. . HUB ASSY, MAIN ROTOR (SEE FIG. 62-2 FOR BALANCE OF BREAKDOWN) (REPLACES 206-011-100-019, -025 AND -129) (REPLACED BY 206-011-100-105, -139, -147, -151 AND -159)	1	NP	FJ
31	206-011-100-139	. . HUB ASSY, MAIN ROTOR (SEE FIG. 62-2 FOR BALANCE OF BREAKDOWN) (REPLACES 206-011-100-019, -025 AND -135) (REPLACED BY 206-011-100-147, -151, -159 AND -105)	1	NP	BC
31	206-011-100-147	. . HUB ASSY, MAIN ROTOR (SEE FIG. 62-2 FOR BALANCE OF BREAKDOWN) (REPLACES 206-011-100-019, -025, -129, -135 AND -139) (REPLACED BY 206-011-100-151, -159 AND -105)	1	NP	BCH
31	206-011-100-151	. . HUB ASSY, MAIN ROTOR (SEE FIG. 62-2 FOR BALANCE OF BREAKDOWN) (REPLACES 206-011-100-019, -025, -129, -135, -139 AND -147) (REPLACED BY 206-011-100-159 AND -105).	1	NP	N
31	206-011-100-159	. . HUB ASSY, MAIN ROTOR (SEE FIG. 62-2 FOR BALANCE OF BREAKDOWN) (REPLACES 206-011-100-019, -025, -129, -135, -139, -147 AND -151) (REPLACED BY 206-011-100-105)	1	NP	LM
31	206-011-100-105	. . HUB ASSY, MAIN ROTOR (SEE FIG. 62-2 FOR BALANCE OF BREAKDOWN) (REPLACES 206-011-100-019, -025, -129, -135, -139, -147, -151 AND -159)	1	SP	
32	206-010-147-001	. . . CAP	2	SP	
33	AN6227-13	. . . PACKING, PREFORMED (REPLACED BY AN6227B13)	2	NP	
33	AN6227B13	. . . PACKING, PREFORMED (REPLACES AN6227-13) (REPLACED BY MS28775-115)	2	NP	
33	MS28775-115	. . . PACKING, PREFORMED (REPLACES AN6227B13) (REPLACED BY M83461/1-115)	2	NP	
33	M83461/1-115	. . . PACKING, PREFORMED (REPLACES MS28775-115)	2	SP	
34	F52NTE-242	. . . NUT (USBL ON 206-011-100-009, -019, -025 AND -135) (REPLACED BY 206-011-119-005) (ALTERNATE PART)	2	NP	
34	F52NTE-2412	. . . NUT	2	NP	
34	206-011-119-005	. . . NUT (REPLACES F52NTE-2412, F52NTE-242)	2	SP	
35	206-011-136-001	. . . WASHER	2	SP	
36	206-011-135-001	. . . BOLT ASSY (REPLACED BY 206-011-135-101)	2	NP	A
36	206-011-135-101	. . . BOLT ASSY (REPLACES 206-011-135-001)	2	SP	A
36	206-011-135-005	. . . BOLT ASSY (USBL ON 206-011-100-019, -025, -129, -139, -147, -151, -159 AND -135) (REPLACED BY 206-011-135-105)	2	NP	
36	206-011-135-105	. . . BOLT ASSY (USBL ON 206-011-100-019, -025, -105, -129, -139, -147, -151, -159 AND -135) (REPLACES 206-011-135-005)	2	SP	
37	206-011-137-001	. . . PLUG	1	SP	

(1) INDEX NUMBER	(2) PART NUMBER	(3) ITEM NAME	(4) UNIT PER ASSY	(5) A V A I L	(6) U O C
		<b>Figure 62-1. Hub and Blade Installation, Main Rotor (Cont'd)</b>			
38	206-015-001-001	.. BLADE ASSY (NOTE 2) (USBL ON 206-011-001-031, -035, -143, -149, -153 AND -155) (REPLACED BY 206-015-001-103, -105 AND -107) . . . . .	2	NP	ABC H
38	206-015-001-103	.. BLADE ASSY (NOTE 2) (REPLACES 206-015-001-001) (REPLACED BY 206-015-001-105 AND -107) . . . . .	2	NP	
38	206-015-001-105	.. BLADE ASSY (NOTE 2) (USBL ON 206-011-001-155) (REPLACES 206-015-001-103) (REPLACED BY 206-015-001-107) . . . . .	2	P	G
38	206-015-001-107	.. BLADE ASSY (NOTE 2) (USBL ON 206-011-001-157) (REPLACES 206-015-001-105) (REPLACED BY 206-015-001-115) . . . . .	2	P	O
38	206-015-001-115	.. BLADE ASSY (NOTE 2) (USBL ON 206-011-001-157) (REPLACES 206-015-001-107) . . . . . (ALTERNATE PART)	2	SP	P
38	206-015-001-125	.. BLADE ASSY (NOTE 2) . . . . .	REF	P	
38	206-015-001-109	.. BLADE ASSY (NOTE 3) (REPLACED BY 206-015-001-117) . . . . .	REF	P	
38	206-015-001-117	.. BLADE ASSY (NOTE 3) (REPLACES 206-015-001-109) . . . . . (ALTERNATE PART)	REF	SP	
38	206-015-001-127	.. BLADE ASSY (NOTE 3) . . . . .	REF	P	
38	206-015-001-111	.. BLADE ASSY (NOTE 4) (REPLACED BY 206-015-001-119) . . . . .	REF	P	
38	206-015-001-119	.. BLADE ASSY (NOTE 4) (REPLACES 206-015-001-111) . . . . . (ALTERNATE PART)	REF	SP	Q
38	206-015-001-129	.. BLADE ASSY (NOTE 4) . . . . .	REF	P	
38	206-015-001-113	.. BLADE ASSY (NOTE 5) (REPLACED BY 206-015-001-121) . . . . .	REF	P	
38	206-015-001-121	.. BLADE ASSY (NOTE 5) (REPLACES 206-015-001-113) . . . . . (ALTERNATE PART)	REF	P	
38	206-015-001-131	.. BLADE ASSY (NOTE 5) . . . . .	REF	P	
39	206-010-219-113	.. TRIM TAB, OUTBOARD (USBL ON 206-015-001-001 AND -103) . . . . .	1	NP	
40	206-010-219-001	.. TRIM TAB, OUTBOARD (USBL ON 206-015-001-001 AND -103) . . . . .	1	SP	
41	206-015-517-101	.. TRIM TAB ASSY, OUTBOARD (USBL ON 206-015-001-105, -107, -109 AND -111) (REPLACED BY 206-015-517-105) . . . . .	1	NP	
41	206-015-517-105	.. TRIM TAB ASSY, OUTBOARD (USBL ON 206-015-001-107, -115, -117, -119, -121, -125, -127, -129 AND -131) (REPLACES 206-015-517-101) . . . . .	1	NP	
42	206-015-019-101	.. TRIM TAB ASSY, INBOARD (USBL ON 206-015-001-105, -107, -109 AND -111) (REPLACED BY 206-015-019-105) . . . . .	1	NP	
42	206-015-019-105	.. TRIM TAB ASSY, INBOARD (USBL ON 206-015-001-107, -115, -117, -119, -121, -125, -127, -129 AND -131) (REPLACES 206-015-019-101) . . . . .	1	NP	
43	206-010-233-003	.. PAD, GRIP . . . . .	2	SP	
44	206-010-242-003	.. PAD, WEAR . . . . .	4	SP	
45	206-010-231-001	.. CLOSURE (REPLACED BY 206-010-231-103) . . . . .	1	NP	
45	206-010-231-103	.. CLOSURE (REPLACES 206-010-231-001) . . . . .	1	NP	
46	NAS1189E4P12	.. SCREW . . . . .	2	SP	
47	MS21042L4	.. NUT . . . . .	2	SP	
48	AN960PD416L	.. WASHER (NOTE 1) (REPLACED BY AN960JD416L) . . . . .	2	NP	
48	AN960JD416L	.. WASHER (NOTE 1) (REPLACES AN960PD416L) (REPLACED BY NAS1149D0416J) . . . . .	2	NP	
48	NAS1149D0416J	.. WASHER (NOTE 1) (REPLACES AN960JD416L) . . . . .	2	SP	
49	AN960-416	.. WASHER (NOTE 1) (REPLACED BY NAS1149F0463P) . . . . .	6	NP	
49	NAS1149F0463P	.. WASHER (NOTE 1) (REPLACES AN960-416) . . . . .	6	SP	
50	AN970-4	.. WASHER (NOTE 1) . . . . .	1	SP	
51	AN4-7A	.. BOLT (NOTE 1) . . . . .	2	SP	
51	AN4-8A	.. BOLT (NOTE 1) . . . . .	2	NP	
51	AN4-9A	.. BOLT (NOTE 1) . . . . .	2	NP	
51	AN4-10A	.. BOLT (NOTE 1) . . . . .	2	SP	
51	AN4-11A	.. BOLT (NOTE 1) . . . . .	2	SP	
51	AN4-12A	.. BOLT (NOTE 1) . . . . .	2	SP	

(1) INDEX NUMBER	(2) PART NUMBER	(3) ITEM NAME	(4) UNIT PER ASSY	(5) A V A I L	(6) U O C
		<b>Figure 62-1. Hub and Blade Installation, Main Rotor (Cont'd)</b>			
51	AN4-13A	... BOLT (NOTE 1).....	2	SP	
51	AN4-14A	... BOLT (NOTE 1).....	2	SP	
51	AN4-15A	... BOLT (NOTE 1).....	2	SP	
51	AN4-16A	... BOLT (NOTE 1).....	2	SP	
51	AN4-17A	... BOLT (NOTE 1).....	2	SP	
52	MS35489-40	... GROMMET.....	1	SP	
53	NAS43DD4-24	... SPACER.....	1	NP	
		NOTE 1: REFER TO BHT-206L4-MM FOR QTY AND USAGE.			
		NOTE 2: BLADE ASSEMBLIES 206-015-001-001, 206-015-001-103, 206-015-001-105, 206-015-001-107, 206-015-001-115, AND 206-015-001-125 HAVE A STANDARD WHITE PAINT SCHEME.			
		NOTE 3: BLADE ASSEMBLIES 206-015-001-109, 206-015-001-117, AND 206-015-001-127 HAVE A BLACK AND WHITE HIGH VISIBILITY PAINT SCHEME.			
		NOTE 4: BLADE ASSEMBLIES 206-015-001-111, 206-015-001-119, AND 206-015-001-129 HAVE AN ORANGE AND WHITE HIGH VISIBILITY PAINT SCHEME.			
		NOTE 5: BLADE ASSEMBLIES 206-015-001-113, 206-015-001-121, AND 206-015-001-131 HAVE A BLACK HIGH VISIBILITY PAINT SCHEME.			
		<b>USABLE ON CODES</b>			
		<b>CODE            MODEL            SERIAL NUMBER</b>			
		A            206L            45004-45058			
		B            206L/L1        45059-45779, 46601-46617			
		C            206L3            51001-51025			
		D            206L1/L3        45780-45790, 51026-51230			
		E            206L3/L4        51231-51612, 52001-SUB			
		F            206L/L1        45059-45556, 46601-46617			
		G            206L3            51185-51230			
		H            206L1/L3        45780-45790, 51026-51184			
		J            206L1            45557-45779			
		L            206L/L1        45059-45790, 46601-46617			
		M            206L4            52001-52206			
		N            206L3            51185-51582			
		O            206L3/L4        51231-51612, 52001-52222			
		P            206L4            52223-52402			
		Q            206L4            52403-SUB			

(1) INDEX NUMBER	(2) PART NUMBER	(3) ITEM NAME	(4) UNIT PER ASSY	(5) A V A I L	(6) U O C
		<p><b>Figure 62-1. Hub and Blade Installation, Main Rotor (Cont'd)</b></p> <p><b>AVAIL CODE      DEFINITION</b></p> <p>P                    Procurable</p> <p>NP                  Non Procurable</p> <p>SP                  Normal Stock/Procurement</p> <p>Please see Chapter 1 for additional information on availability codes as well as general use of the Illustrated Parts Breakdown manual.</p>			



206LS\_IPB\_62\_0002

Figure 62-2. Hub Assembly, Main Rotor