

## NOTICE

Revision 1 updates the front matter as well as Chapter 53.

Please incorporate these updates into the Illustrated Parts Breakdown Manual in accordance with the Log of Pages (attached).

Bell Helicopter would also like to thank its Customers for providing us with Customer Feedback information. This information is very much appreciated and allows us to improve the quality of our manuals with each revision.

***Bell*** Helicopter

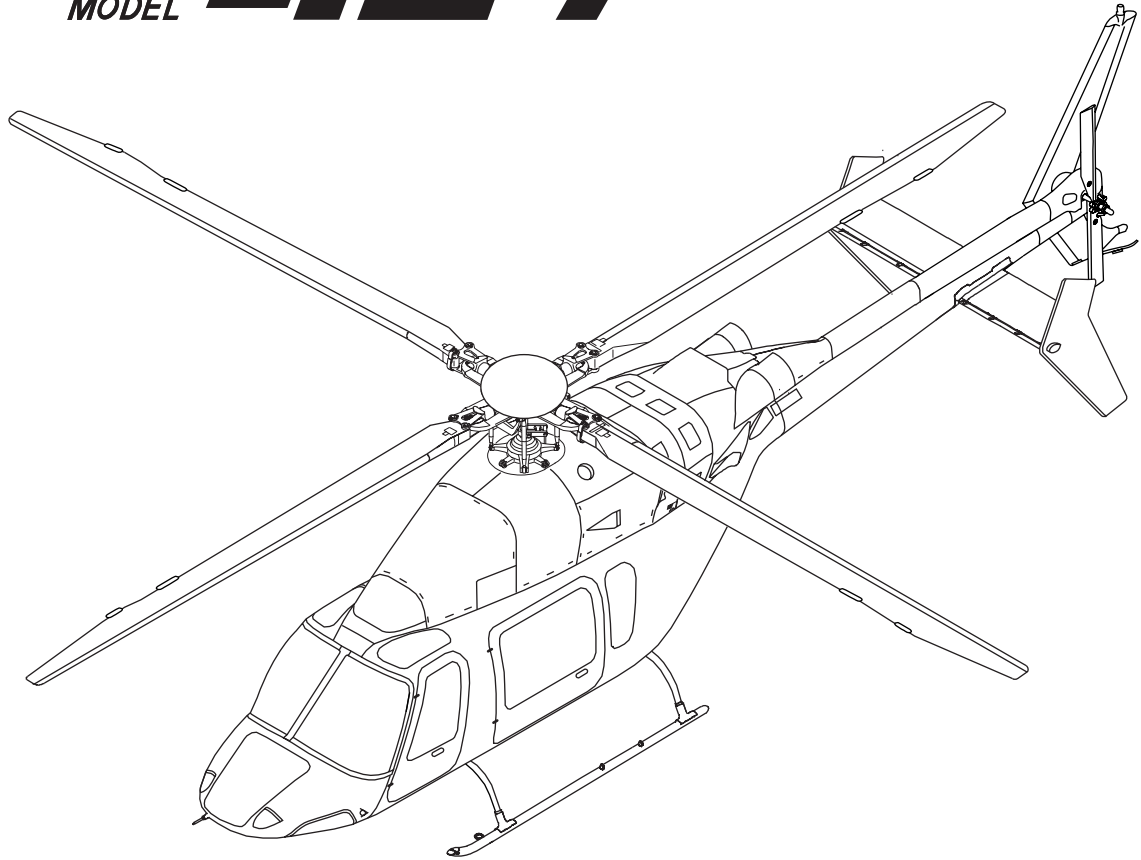
A Textron Company

POST OFFICE BOX 482 • FORT WORTH, TEXAS 76101

**REISSUE — 30 JUNE 2000**  
**REVISION 1 — 20 OCTOBER 2009**



**Bell**  
MODEL **427**



**ILLUSTRATED PARTS  
BREAKDOWN MANUAL**

**NOTICE**

The instructions set forth in this manual, as supplemented or modified by Alert Service Bulletins (ASB) or other directions issued by Bell Helicopter Textron Inc. and Airworthiness Directives (AD) issued by the applicable regulatory agencies, shall be strictly followed.

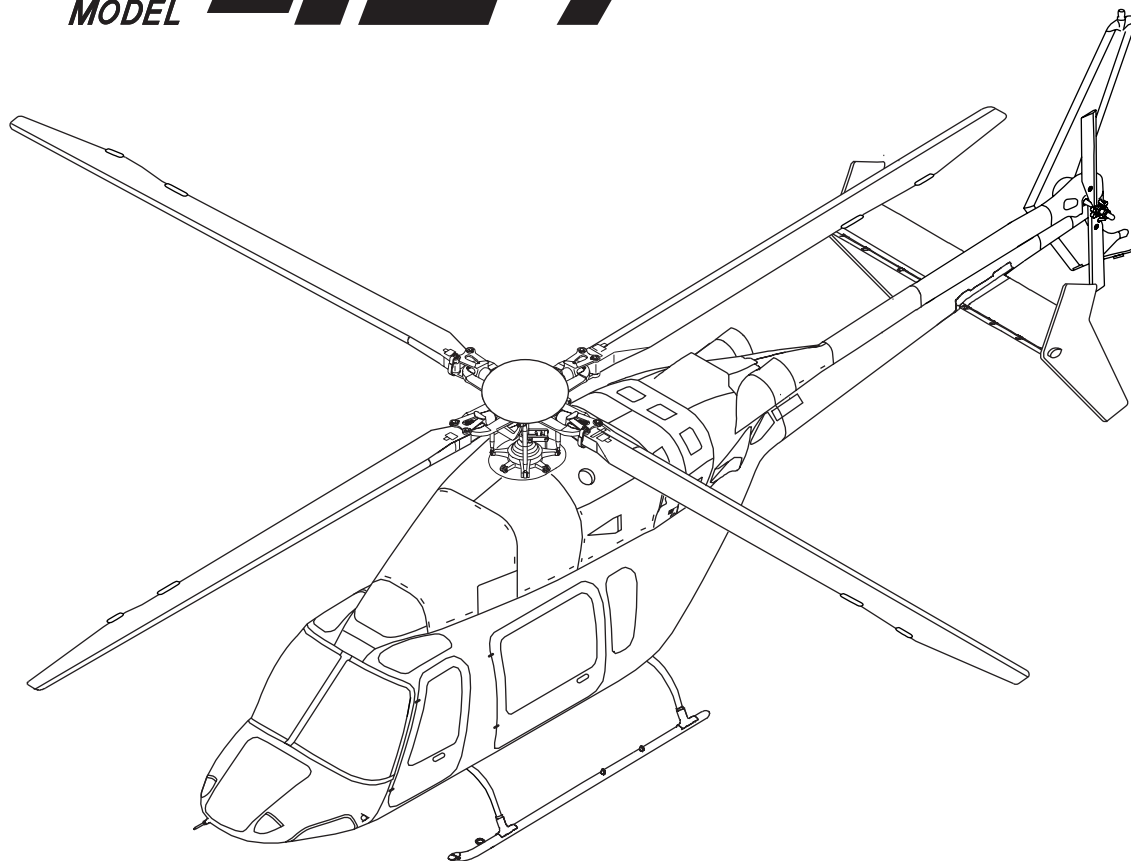
**Bell** Helicopter

A Textron Company

POST OFFICE BOX 482 • FORT WORTH, TEXAS 76101



# **Bell** MODEL **427**



## **ILLUSTRATED PARTS BREAKDOWN MANUAL**

### **NOTICE**

The instructions set forth in this manual, as supplemented or modified by Alert Service Bulletins (ASB) or other directions issued by Bell Helicopter Textron Inc. and Airworthiness Directives (AD) issued by the applicable regulatory agencies, shall be strictly followed.

COPYRIGHT NOTICE  
COPYRIGHT 2009  
BELL © HELICOPTER TEXTRON INC.  
AND BELL HELICOPTER TEXTRON  
CANADA LTD.  
ALL RIGHTS RESERVED

**Bell** helicopter

A Textron Company

POST OFFICE BOX 482 • FORT WORTH, TEXAS 76101

**REISSUE — 30 JUNE 2000  
REVISION 1 — 20 OCTOBER 2009**

### **PROPRIETARY RIGHTS NOTICE**

These data are proprietary to Bell Helicopter Textron Inc. Disclosure, reproduction, or use of these data for any purpose other than helicopter operation or maintenance is forbidden without prior written authorization from Bell Helicopter Textron Inc.

### **DESTINATION CONTROL STATEMENT**

These commodities, technology, or software were exported from the United States in accordance with the Export Administration Regulations (EAR). Diversion contrary to U.S. law prohibited. The data contained in this manual are classified as ECCN EAR99.

Additional copies of this publication may be obtained by contacting:  
Commercial Publication Distribution Center  
Bell Helicopter Textron Inc.  
P. O. Box 482  
Fort Worth, Texas 76101-0482

## **WARNING**

**THIS MANUAL APPLIES ONLY TO HELICOPTERS AND COMPONENTS MAINTAINED IN ACCORDANCE WITH BELL HELICOPTER TEXTRON (BELL) APPROVED PROCEDURES USING BELL APPROVED PARTS.**

**ALL INSPECTION, REPAIR AND OVERHAUL PROCEDURES PUBLISHED BY BELL, INCLUDING PART RETIREMENT LIFE, ARE BASED SOLELY ON THE USE OF BELL PARTS THAT HAVE BEEN MAINTAINED USING BELL APPROVED DATA. THE DATA PUBLISHED HEREIN OR OTHERWISE SUPPLIED BY BELL IS NOT APPLICABLE TO NON-BELL PARTS OR PARTS THAT HAVE BEEN REPAIRED USING DATA AND/OR PROCESSES NOT APPROVED BY BELL.**

**BELL IS NOT RESPONSIBLE FOR ANY PART OTHER THAN THOSE THAT IT HAS APPROVED.**

**BEFORE PERFORMING ANY PROCEDURE CONTAINED IN THIS MANUAL YOU MUST INSPECT THE AFFECTED PARTS AND RECORDS FOR EVIDENCE OF ANY MANUFACTURE, REPAIR, REWORK OR USE OF A PROCESS NOT APPROVED BY BELL.**

**IF YOU IDENTIFY OR SUSPECT THE USE OF PARTS NOT AUTHORIZED BY BELL, EITHER REMOVE THE AFFECTED ITEM FROM THE AIRCRAFT OR OBTAIN INSTRUCTIONS FOR CONTINUED AIRWORTHINESS FROM THE MANUFACTURER OR THE ORGANIZATION THAT APPROVED THE REPAIR.**

## CUSTOMER SUPPORT AND SERVICES

Flying smart means that no matter where you are, or what time it is, you can make a call and get additional information, clarification, or advice on a technical or operational issue concerning your helicopter or information contained in our Technical Publications. Product Support Engineering (PSE) is just a phone call away and may be contacted as follows:

**MODEL 47, 206, OR 407**

Phone: 450-437-2862 or 800-243-6407 (U.S./Canada)  
Fax: 450-433-0272  
E-mail: [pseilight@bellhelicopter.textron.com](mailto:pseilight@bellhelicopter.textron.com)

**MODEL 222, 230, 427, 429, OR 430**

Phone: 450-437-2077 or 800-463-3036 (U.S./Canada)  
Fax: 450-433-0272  
E-mail: [pseinter@bellhelicopter.textron.com](mailto:pseinter@bellhelicopter.textron.com)

**MODEL 204, 205, 212, OR 412**

Phone: 450-437-6201 or 800-363-8028 (U.S./Canada)  
Fax: 450-433-0272  
E-mail: [psemedium@bellhelicopter.textron.com](mailto:psemedium@bellhelicopter.textron.com)

**MODEL 210, 214, HUEY II, SURPLUS MILITARY**

Phone: 817-280-3548  
Fax: 817-280-2635  
E-mail: [psemil214@bellhelicopter.textron.com](mailto:psemil214@bellhelicopter.textron.com)

For additional information on Customer Support and Services as well as Product Support Engineering (PSE) and your local Customer Service Representative (CSR) network, please access <http://www.bellhelicopter.com/en/support>.

**LOG OF REVISIONS**

Insert latest revision pages and dispose of superseded ones.

On a revised page, the text and/or illustration affected by the latest revision is shown by a vertical line. A revised page with only a vertical line next to the page number indicates that text has shifted or that non-technical correction(s) were made on that page.

Basic..... 0 ..... 01 JUN 99      Reissue ..... 0 ..... 30 JUN 00      Revision ..... 1 ..... 20 OCT 09

**LOG OF PAGES**

<b>Page No.</b>	<b>Rev No.</b>	<b>Page No.</b>	<b>Rev No.</b>	<b>Page No.</b>	<b>Rev No.</b>
<b>VOLUME 1</b>					
Cover .....	1	Chapter 21		23/24 .....	0
Title .....	1	1 – 4 .....	0	25 – 38 .....	0
PN .....	1	<b>Chapter 25</b>			
Warning .....	1	1 – 18 .....	0	<b>Chapter 29</b>	
CSS .....	1	19/20 .....	0	1 – 2 .....	0
A – B .....	1	21 – 24 .....	0	3/4 .....	0
C/D .....	1	25/26 .....	0	5 – 10 .....	0
Help .....	1	27 – 28 .....	0	11/12 .....	0
Customer Feedback .....	1	29/30 .....	0	13 – 16 .....	0
Helicopter Sale Notice .....	1	31 – 34 .....	0	17/18 .....	0
Warranty .....	1	35/36 .....	0	19 – 32 .....	0
BR .....	1	37 – 40 .....	0	33/34 .....	0
TR .....	1	41/42 .....	0	<b>Chapter 32</b>	
i/ii .....	1	43 – 48 .....	0	1 – 6 .....	0
		49/50 .....	0	7/8 .....	0
Chapter 1		51 – 52 .....	0	9 – 16 .....	0
1/2 .....	0	53/54 .....	0	<b>Chapter 52</b>	
3 – 12 .....	0	55 – 56 .....	0	1 – 8 .....	0
		57/58 .....	0	9/10 .....	0
Chapter 8		<b>Chapter 26</b>			
1 – 4 .....	0	1 – 6 .....	0	11 – 26 .....	0
		7/8 .....	0	27/28 .....	0
Chapter 9		9 – 12 .....	0	<b>Chapter 53</b>	
1 – 4 .....	0	13/14 .....	0	1/2 .....	0
5/6 .....	0	<b>Chapter 28</b>			
		1 – 2 .....	0	3 – 6 .....	0
Chapter 10		3/4 .....	0	7/8 .....	0
1 – 2 .....	0	5 – 6 .....	0	9 – 10 .....	0
3/4 .....	0	7/8 .....	0	11/12 .....	0
		9 – 18 .....	0	13 – 14 .....	0
Chapter 11		19/20 .....	0	15/16 .....	0
1 – 4 .....	0	21 – 22 .....	0	17 – 28 .....	0
				29/30 .....	0
				31 – 40 .....	0

**LOG OF PAGES (CONT)**

<b>Page No.</b>	<b>Rev No.</b>	<b>Page No.</b>	<b>Rev No.</b>	<b>Page No.</b>	<b>Rev No.</b>
41/42.....	0	65/66.....	0	Chapter 71	
43 – 80.....	0	67 – 70.....	0	1 – 6.....	0
81/82.....	0	71/72.....	0	7/8.....	0
83 – 90.....	0	73 – 74.....	0	9 – 12.....	0
91/92.....	0	75/76.....	0	13/14.....	0
93 – 100.....	0	77 – 78.....	0	15 – 28.....	0
101/102.....	0	79/80.....	0	29/30.....	0
103 – 104.....	0	81 – 100.....	0	31 – 32.....	0
105/106.....	0			33/34.....	0
107 – 120.....	0	Chapter 64			
121/122.....	0	1 – 6.....	0	Chapter 76	
123 – 124.....	0	7/8.....	0	1 – 4.....	0
125/126.....	0			5/6.....	0
127 – 131.....	0	Chapter 65		7 – 12.....	0
132 – 134.....	1	1 – 2.....	0		
134A/134B.....	1	3/4.....	0	Chapter 79	
135.....	1	5 – 8.....	0	1 – 4.....	0
136 – 138.....	0	9/10.....	0	5/6.....	0
139/140.....	0	11 – 14.....	0	7 – 10.....	0
141 – 148.....	0			11/12.....	0
149/150.....	0	Chapter 67		13 – 18.....	0
151/154.....	0	1 – 6.....	0	19/20.....	0
155/156.....	0	7/8.....	0	21 – 22.....	0
157 – 160.....	0	9 – 10.....	0	23/24.....	0
161/162.....	0	11/12.....	0	25 – 26.....	0
163 – 164.....	0	13 – 22.....	0	27/28.....	0
165/166.....	0	23/24.....	0	29 – 30.....	0
167 – 182.....	0	25 – 26.....	0	31/32.....	0
183/184.....	0	27/28.....	0		
		29 – 30.....	0	Chapter 95	
Chapter 62		31/32.....	0	1 – 2.....	0
1 – 2.....	0	33 – 34.....	0	3/4.....	0
3/4.....	0	35/36.....	0	5 – 8.....	0
5 – 6.....	0	37 – 38.....	0	9/10.....	0
7/8.....	0	39/40.....	0	11 – 14.....	0
9 – 16.....	0	41 – 42.....	0	15/16.....	0
17/18.....	0	43/44.....	0	17 – 20.....	0
19 – 22.....	0	45 – 52.....	0	21/22.....	0
		53/54.....	0	23 – 26.....	0
Chapter 63		55 – 56.....	0	27/28.....	0
1 – 4.....	0	57/58.....	0		
5/6.....	0	59 – 60.....	0	Chapter 96	
7 – 16.....	0	61/62.....	0	1/2.....	0
17/18.....	0	63 – 68.....	0	3 – 22.....	0
19 – 20.....	0	69/70.....	0	23/24.....	0
21/22.....	0	71 – 72.....	0	25 – 26.....	0
23 – 60.....	0	73/74.....	0	27/28.....	0
61/62.....	0	75 – 76.....	0	29 – 32.....	0
63 – 64.....	0	77/78.....	0	33/34.....	0

**LOG OF PAGES (CONT)**

<b>Page No.</b>	<b>Rev No.</b>	<b>Page No.</b>	<b>Rev No.</b>	<b>Page No.</b>	<b>Rev No.</b>
35 – 40 .....	0	111 – 114 .....	0	Chapter 97	
41/42 .....	0	115/116 .....	0	1 – 12 .....	0
43 – 44 .....	0	117 – 124 .....	0	13/14 .....	0
45/46 .....	0	125/126 .....	0	15 – 20 .....	0
47 – 48 .....	0	127 – 152 .....	0	21/22 .....	0
49/50 .....	0	153/154 .....	0	23 – 24 .....	0
51 – 54 .....	0	155 – 160 .....	0	25/26 .....	0
55/56 .....	0	161/162 .....	0	27 – 28 .....	0
57 – 62 .....	0	163 – 164 .....	0	29/30 .....	0
63/64 .....	0	165/166 .....	0	31– 34 .....	0
65 – 66 .....	0	167 – 170 .....	0	35/36 .....	0
67/68 .....	0	171/172 .....	0	Chapter 99	
69 – 70 .....	0	173 – 184 .....	0	1/2 .....	0
71/72 .....	0	185/186 .....	0	3 – 4 .....	0
73 – 74 .....	0	187 – 194 .....	0	Index of Part Numbers	
75/76 .....	0	195/196 .....	0	1 – 122 .....	0
77 – 82 .....	0	197 – 200 .....	0	123/124 .....	0
83/84 .....	0	201/202 .....	0	Index of Ref Des	
85 – 96 .....	0	203 – 206 .....	0	1 – 6 .....	0
97/98 .....	0	207/208 .....	0	7/8 .....	0
99 – 104 .....	0	209 – 218 .....	0		
105/106 .....	0	219/220 .....	0		
107 – 108 .....	0	221 – 230 .....	0		
109/110 .....	0	231/232 .....	0		



**H** ELP

**E** VALUATE

**L** OGISTICS

**P** UBLICATIONS

Have you found something wrong with this manual — an error, an inconsistency, unclear instructions, etc.? Although we strive for accuracy and clarity, we may make errors on occasion. If we do and you discover it, we would appreciate your telling us about it so that we can change whatever is incorrect or unclear. Please be as specific as possible.

Your complaint or suggestion will be acknowledged and we will tell you what we intend to do.

You may use the enclosed Customer Feedback form, as applicable, to inform us where we have erred.

Your assistance is sincerely appreciated.



## ***CUSTOMER FEEDBACK***

**RETURN VIA FAX TO PRODUCT SUPPORT ENGINEERING (450) 433-0272**

**Manual Title:** \_\_\_\_\_

**Manual Number (if assigned):** \_\_\_\_\_

**Date of Issue:** \_\_\_\_\_

**Date of Last Revision:** \_\_\_\_\_

**Section, Chapter, Paragraph Affected:** \_\_\_\_\_

**Your Feedback:** \_\_\_\_\_

\_\_\_\_\_

\_\_\_\_\_

\_\_\_\_\_

**Now Reads:** \_\_\_\_\_

\_\_\_\_\_

\_\_\_\_\_

**Should Read:** \_\_\_\_\_

\_\_\_\_\_

\_\_\_\_\_

\_\_\_\_\_

**Your Name:** \_\_\_\_\_

**Address:** \_\_\_\_\_

\_\_\_\_\_

**Position:** \_\_\_\_\_ **Telephone No.:** \_\_\_\_\_

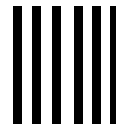
**Company:** \_\_\_\_\_ **Fax No.:** \_\_\_\_\_

**Reference No. (your initials and date):** \_\_\_\_\_

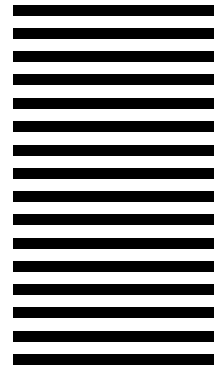
(If you choose to mail this form, fold in thirds with address exposed, tape and mail.)

TAPE HERE

From \_\_\_\_\_  
\_\_\_\_\_  
\_\_\_\_\_



POSTAGE  
NECESSARY



**Bell Helicopter**  
A Textron Company

**PRODUCT SUPPORT ENGINEERING**  
12,800 rue de l'Avenir  
Mirabel Québec, Canada, J7J 1R4

FOLD ON DOTTED LINES AND TAPE

TAPE HERE

**IMPORTANT**  
**HELICOPTER SALE NOTICE**

Please complete this Form and return by Mail or FAX (450-433-0272, Attention: CPDC) to **Bell Helicopter Textron**. This will ensure that the New Owners receive updates to their ***Bell Helicopter Technical Manuals*** and ***Bulletins***.

Model of Helicopter Sold or Purchased \_\_\_\_\_

\_\_\_\_\_

Bell Serial Number \_\_\_\_\_

\_\_\_\_\_

Registration Number \_\_\_\_\_

\_\_\_\_\_

Company or Individual who purchased Helicopter \_\_\_\_\_

\_\_\_\_\_

Address \_\_\_\_\_

City \_\_\_\_\_

State \_\_\_\_\_

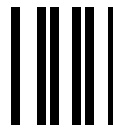
Zip Code \_\_\_\_\_

Country \_\_\_\_\_

FAX No. \_\_\_\_\_ Telephone No. \_\_\_\_\_

TAPE HERE

From \_\_\_\_\_  
\_\_\_\_\_  
\_\_\_\_\_

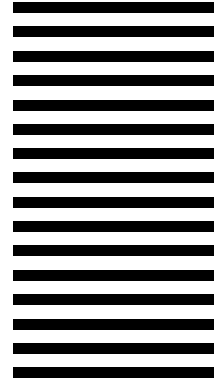


NO POSTAGE  
NECESSARY  
IF MAILED  
IN THE  
UNITED STATES

**BUSINESS REPLY MAIL**  
FIRST CLASS PERMIT NO. 1744 FORT WORTH, TEXAS



**COMMERCIAL PUBLICATION DISTRIBUTION CENTER  
P.O. BOX 482  
FORT WORTH, TEXAS 76101-0482**



FOLD ON DOTTED LINES AND TAPE

TAPE HERE

## **SPARE PARTS WARRANTY**

### **ONE YEAR/1,000 HOURS PRORATED**

**WARRANTY AND REMEDY:** Seller warrants each new helicopter part or helicopter part reconditioned by seller to be free from defect in material and workmanship under normal use and service and if installed on Bell model helicopters. Seller's sole obligation under this warranty is limited to replacement or repair of parts which are determined to Seller's reasonable satisfaction to have been defective with 1,000 hours of operation or one (1) year after installation, whichever occurs first and reimbursement of reasonable freight charges. After 200 hours of use, there will be a prorated charge to the Purchaser for replacement parts (prorating the hours of total use against the then applicable part life or 2,000 hours, whichever is the lesser). Defective parts must be reported in writing to the Seller's Warranty Administration within 90 days of being found defective. Replacement of parts may be with either new or reconditioned parts, at Seller's election. Warranty adjustment is contingent upon the Purchaser complying with the Warranty Remedies as described in the Commercial Warranty Information brochure and the Seller's Warranty Administration disposition instructions for defective parts. Failure to comply with all of the terms of this paragraph may, at Seller's sole option, void this warranty.

**NOTE:** Parts, components and assemblies of all new helicopters may have been restored or reworked due to marks, blemishes, dents or other irregularities during the manufacturing process. Such restoration and/or rework is permitted under Seller's approved manufacturing and engineering processes and guidelines. The restoration and/or rework so completed does not render such items defective in material or workmanship.

THIS WARRANTY IS GIVEN AND ACCEPTED IN PLACE OF (i) ALL OTHER WARRANTIES OR CONDITIONS, EXPRESS OR IMPLIED, INCLUDING BUT NOT LIMITED TO THE IMPLIED WARRANTIES OR CONDITIONS OF MERCHANTABILITY AND FITNESS FOR A PARTICULAR PURPOSE AND (ii) ANY OBLIGATION, LIABILITY, RIGHT, CLAIM OR REMEDY IN CONTRACTOR IN TORT (DELICT), INCLUDING PRODUCT LIABILITIES BASED UPON STRICT LIABILITY, NEGLIGENCE, OR IMPLIED WARRANTY IN LAW.

This warranty is the only warranty made by Seller. The Purchaser's sole remedy for a breach of this warranty or any defect in a part is the repair or replacement of helicopter parts and reimbursement of reasonable freight charges as provided herein. Seller excludes liability, whether as a result of a breach of contract or warranty, negligence or strict product liability, for incidental or consequential damages, including without limitation, damage to the helicopter or other property, costs and expenses resulting from required changes or modifications to helicopter components and assemblies, changes in retirement lives and overhaul periods, local customs fees and taxes, and costs or expenses for commercial losses or lost profits due to loss of use or grounding of helicopters or otherwise.

Seller makes no warranty and disclaims all liability in contract or in tort (delict), including, without limitation, negligence and strict tort (delictual) liability, with respect to work performed by third parties at Purchaser's request and with respect to engines, engine accessories, batteries, radios, and avionics, except Seller assigns each manufacturer's warranty to Purchaser to the extent such manufacturer's warranty exists and is assignable.

This warranty shall not apply to any helicopter part which has been repaired or altered outside Seller's factory in any way so as, in Seller's judgment, to affect its stability, safety or reliability, or which has been subject to misuse, negligence or accident, or which has been installed in any aircraft which has been destroyed unless that helicopter has been rebuilt by Bell. A list of destroyed aircraft is obtainable from Bell Product Support. Repairs and alterations which use or incorporate parts and components other than genuine Bell parts or parts approved by Bell for direct acquisition from sources other than Bell itself are not warranted by Bell, and this warranty shall be void to the extent that such repairs and alterations, in Seller's sole judgment, affect the stability, safety or reliability of the helicopter or any part thereof, or damage genuine Bell or Bell-approved parts. No person, corporation or organization, including Bell Customer Service Facilities, is authorized by Seller to assume for it any other liability in connection with the sale of its helicopters and parts.

NO STATEMENT, WHETHER WRITTEN OR ORAL, MADE BY ANY PERSON, CORPORATION OR ORGANIZATION, INCLUDING BELL CUSTOMER SERVICE FACILITIES MAY BE TAKEN AS A WARRANTY NOR WILL IT BIND SELLER.

Seller makes no warranty and disclaims all liability with respect to components or parts damaged by, or worn due to, corrosion. Seller makes no warranty and disclaims all liability for consumables (wear items) which are defined as items required for normal and routine maintenance or replaced at scheduled intervals shorter than the warranty period. "Consumables" include but are not limited to engine and hydraulic oil, oil filters, packings and o-rings, anti-corrosion and/or sealing compounds, brush plating material, nuts, bolts, washers, screws, fluids, compounds, and standard aircraft hardware that is readily available to aircraft operators from sources other than Seller.

All legal actions based upon claims or disputes pertaining to or involving this warranty including, but not limited to, Seller's denial of any claim or portion thereof under this warranty, must be filed in the courts of general jurisdiction of Tarrant County, Texas or in the United States District Court for the Northern District of Texas, Ft. Worth Division located in Ft. Worth, Tarrant County, Texas. In the event that Purchaser files such an action in either of the court systems identified above, and a final judgment in Seller's favor is rendered by such court, then Purchaser shall indemnify Seller for all costs, expenses and attorneys' fees incurred by Seller in defense of such claims. In the event Purchaser files such a legal action in a court other than those specified, and Seller successfully obtains dismissal of that action or transfer thereof to the above described court systems, then Purchaser shall indemnify Seller for all costs, expenses and attorneys' fees incurred by Seller in obtaining such dismissal or transfer.

January 2007



## BULLETIN RECORD

This Bulletin Record provides a current listing of applicable bulletins that have been incorporated in this manual. Subsequent applicable bulletins will be incorporated in future revisions/reissues.

### ALERT SERVICE BULLETINS

ASB NUMBER	SUBJECT	DATE
------------	---------	------

---

### TECHNICAL BULLETINS

TB NUMBER	SUBJECT	DATE
-----------	---------	------

---

## TEMPORARY REVISION RECORD

This Temporary Revision Record provides a current listing of active Temporary Revisions against the manual. Temporary Revisions that have been canceled/incorporated will only be maintained on the record until the next revision is issued. If there are no Temporary Revisions shown on the record, this is confirmation that there are no Temporary Revisions issued against the manual.

TEMP. REV. NO.	TITLE	DATE ISSUED	DATE CANCELED
----------------	-------	-------------	---------------

NOTE: For tracking purposes, Temporary Revisions are now being numbered (Example: TR-1).

## LIST OF CHAPTERS

<b>Title</b>	<b>Chapter</b>
General Information . . . . .	1
Weight and Balance . . . . .	8
Wheel Assembly, Ground Handling . . . . .	9
Parking and Mooring . . . . .	10
Placards and Markings . . . . .	11
Heating, Air Conditioning, and Ventilation . . . . .	21
Equipment and Furnishing . . . . .	25
Fire Protection/Loose Equipment . . . . .	26
Fuel Supply Systems . . . . .	28
Hydraulic System . . . . .	29
Landing Gear . . . . .	32
Doors and Windows . . . . .	52
Fuselage . . . . .	53
Main Rotor . . . . .	62
Main Rotor Drive System . . . . .	63
Tail Rotor . . . . .	64
Tail Rotor Drive System . . . . .	65
Flight Control System . . . . .	67
Power Plant System . . . . .	71
Engine Controls . . . . .	76
Engine Oil System . . . . .	79
Instruments . . . . .	95
Electrical System . . . . .	96
Avionics . . . . .	97
Kits . . . . .	99
Alphabetical Numerical Index . . . . .	Index of Part Number
Reference Designator Index . . . . .	Index of Ref Des



(1) INDEX NUMBER	(2) PART NUMBER	(3) ITEM NAME	(4) UNIT PER ASSY	(5) A V A I L	(6) U O C
		<b>FIGURE: 53-34. Stabilizer installation, horizontal (Cont'd)</b>			
42	427-035-832-102	..FITTING, SUPPORT, RH .....	1	SP	
43	427-035-850-113	..STAB ASSY .....	1	SP	
44	427-035-852-101	..GURNEY FLAP, LH .....	1		
45	427-035-852-102	..GURNEY FLAP, RH .....	1		
46	NAS1832C3-4S	..INSERT .....	16	SP	
47	NAS1832C3-3S	..INSERT .....	4	P	
48	SL2334-3C3	..INSERT, FLOAT .....	22	P	
		NOTE 1: ANY TIME THE HORIZ STAB OR THE SUPPORTS HAVE TO BE REPLACED WITH A NEW ITEM FROM SPARES, THE HORZ STAB WILL NEED TO BE SHIMMED. SEE 427MM FOR INSTRUCTIONS.			
		<b>AVAIL CODE DEFINITION</b>			
		P           Procurable			
		NP          Non Procurable			
		SP          Normal stock/procurable			
		See introduction on availability codes for additional information.			

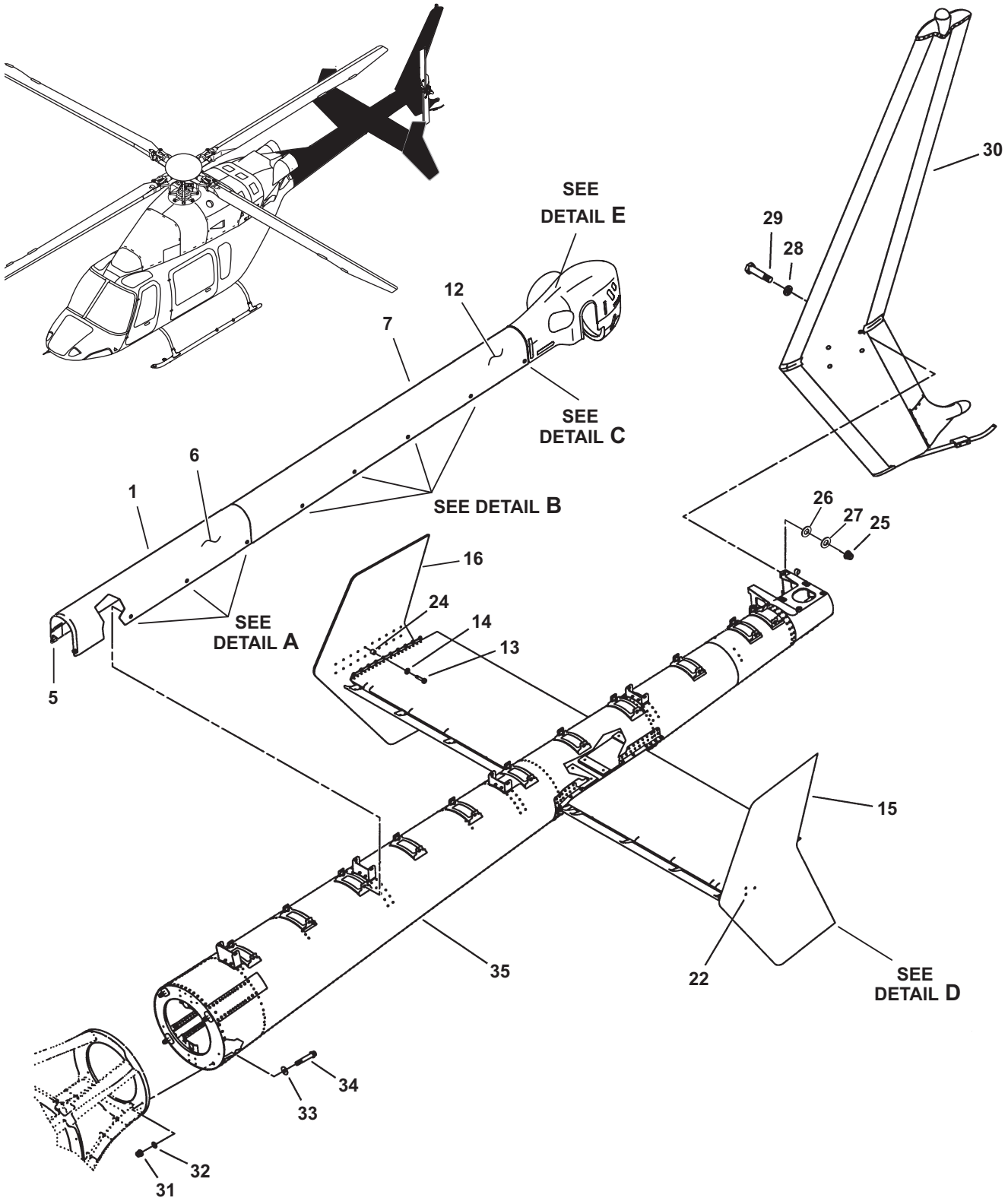
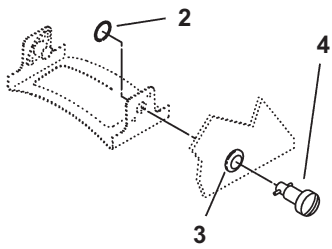
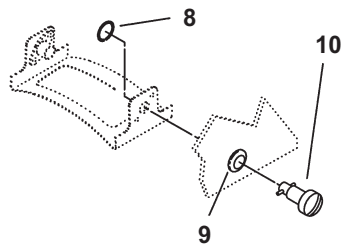


Figure 53-35. Tailboom and Empennage Installation (Sheet 1 of 3)

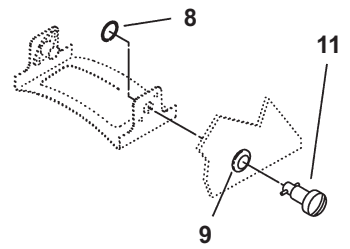
427\_IPB\_53\_0035a



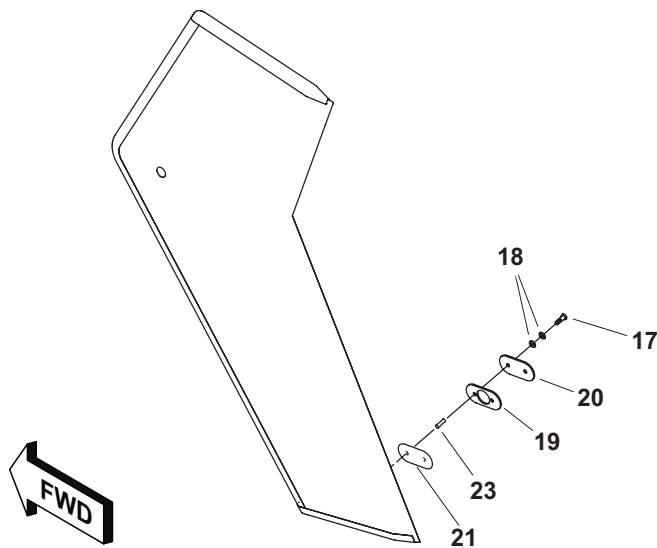
DETAIL A



DETAIL B



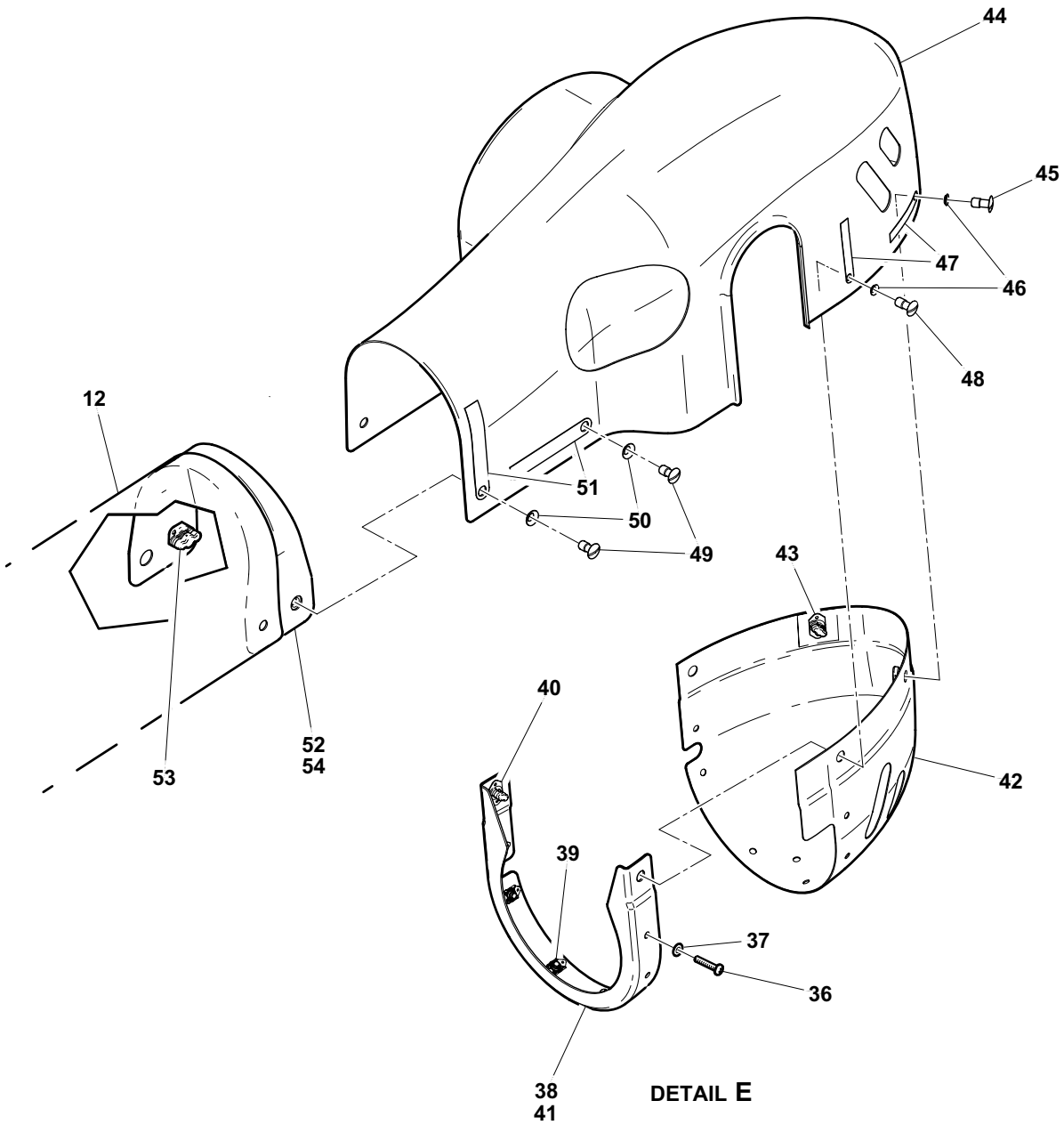
DETAIL C



DETAIL D  
LEFT-HAND SIDE SHOWN  
(RIGHT-HAND SIDE OPPOSITE)

Figure 53-35. Tailboom and Empennage Installation (Sheet 2 of 3)

427\_IPB\_53\_0035b



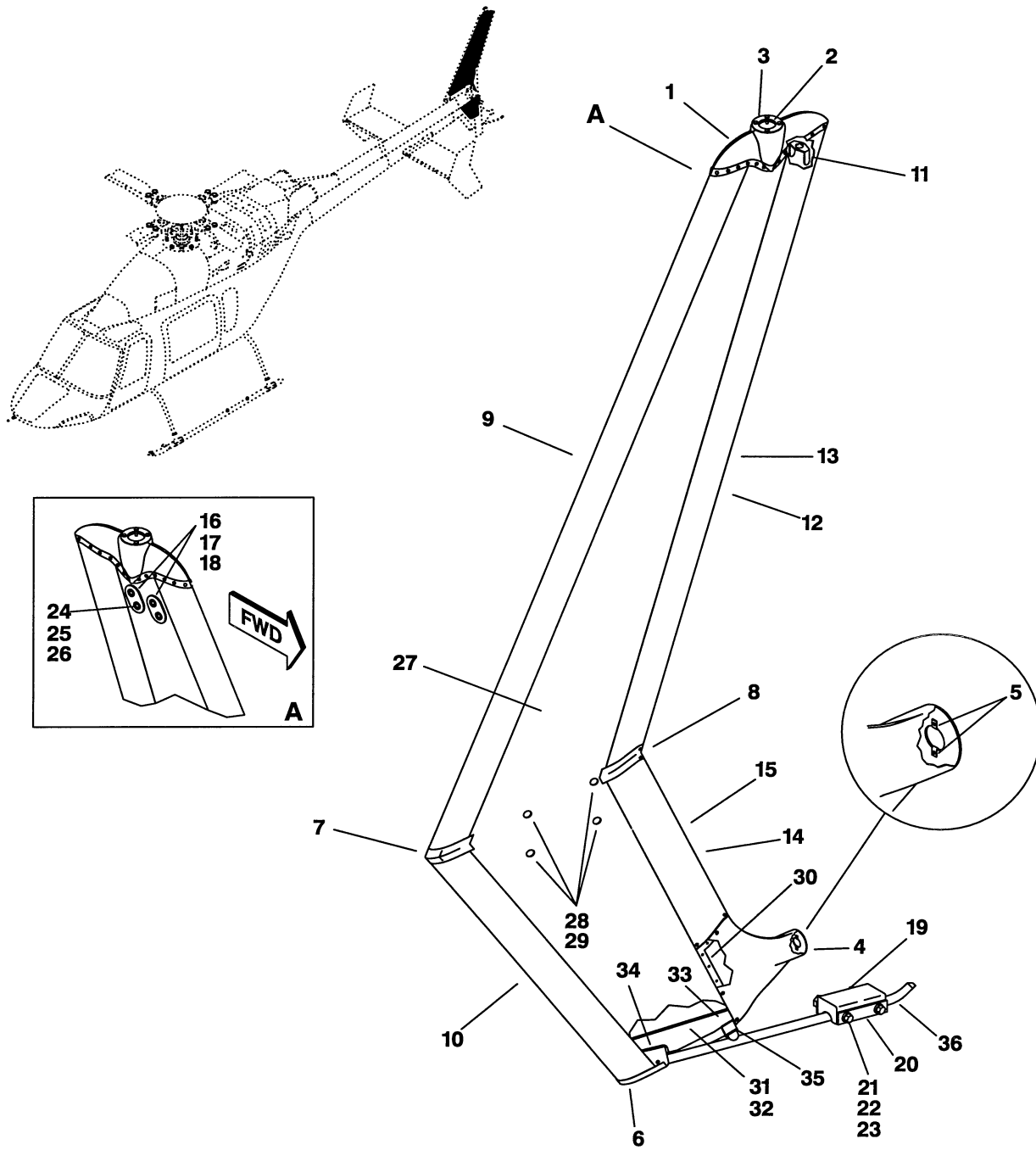
427\_IPB\_53\_0035c

Figure 53-35. Tailboom and Empennage Installation (Sheet 3 of 3)

(1) INDEX NUMBER	(2) PART NUMBER	(3) ITEM NAME	(4) UNIT PER ASSY	(5) A V A I L	(6) U O C
		<b>Figure 53-35. Tailboom and Empennage Installation</b>			
	427-134-800-101	TAILBOOM AND EMPENNAGE INSTL (S/N 56001 THRU 56024) . .	1	NP	
	427-134-800-103	TAILBOOM AND EMPENNAGE INSTL (S/N 56025 THRU 56057, 58001 THRU 58002) . . . . .	1	NP	
	427-134-800-105	TAILBOOM AND EMPENNAGE INSTL (S/N 56058 THRU SUB, 58003 THRU SUB) . . . . .	1	NP	
1	427-034-863-101	. COVER ASSY, DRIVESHAFT, FWD. . . . .	1	SP	
2	50-037C1	. . RING, RETAINING . . . . .	6	SP	
3	50-036C1	. . GROMMET . . . . .	6	SP	
4	50-019-5C	. . STUD (REPLACED BY 50-019-5H) . . . . .	6	NP	
4	50-019-5H	. . STUD (REPLACES 50-019-5C) . . . . .	6	SP	
5	50-008R2C	. . RECEPTACLE . . . . .	2	SP	
6	427-034-863-103	. COVER, FWD . . . . .	1	NP	
7	427-034-862-105	. COVER ASSY, DRIVESHAFT, AFT . . . . .	1	SP	
8	50-037C1	. . RING, RETAINING . . . . .	10	SP	
9	50-036C1	. . GROMMET . . . . .	10	SP	
10	50-019-5C	. . STUD (REPLACED BY 50-019-5H) . . . . .	8	NP	
10	50-019-5H	. . STUD (REPLACES 50-019-5C) . . . . .	8	SP	
11	50-019-8C	. . STUD (REPLACED BY 50-019-8H) . . . . .	2	SP	
11	50-019-8H	. . STUD (REPLACES 50-019-8C) . . . . .	2	SP	
12	427-034-862-107	. COVER, AFT . . . . .	1	P	
13	NAS1133E3	. SCREW . . . . .	40	SP	
14	NAS1149C0316R	. WASHER . . . . .	40	SP	
15	427-035-836-107	. FIN ASSY, AUX, LH (POST ASB 427-01-07) (S/N 56001 THRU SUB, 58001 THRU SUB) . . . . .	1	SP	
16	427-035-836-108	. FIN ASSY, AUX, RH (POST ASB 427-01-07) (S/N 56001 THRU SUB, 58001 THRU SUB) . . . . .	1	SP	
17	120-225C3-09	. . SCREW . . . . .	2	P	
18	NAS1149E0332R	. . WASHER (POST ASB 427-01-07) (S/N 56001 THRU SUB, 58001 THRU SUB) . . . . .	4	SP	
19	407-023-003-139	. . WEIGHT . . . . .	1	SP	
20	407-023-003-145	. . WEIGHT (POST ASB 427-01-07) (S/N 56001 THRU SUB, 58001 THRU SUB) . . . . .	1	SP	
21	427-035-836-129	. . PAD (POST ASB 427-01-07) (S/N 56001 THRU SUB, 58001 THRU SUB) . . . . .	1	SP	
22	NAS1832C06-8S	. . INSERT . . . . .	3	SP	
23	NAS1832C3-8S	. . INSERT (POST ASB 427-01-07) (S/N 56001 THRU SUB, 58001 THRU SUB) . . . . .	2	P	
24	80-007-16C3	. . INSERT . . . . .	20	SP	
	427-035-830-101	. STABILIZER INSTL, HORIZONTAL (S/N 56001 THRU 56014) (SEE FIG. 53-34 FOR BREAKDOWN) . . . . .	1	NP	
	427-035-830-107	. STABILIZER INSTL, HORIZONTAL (S/N 56015 THRU 56024) (SEE FIG. 53-34 FOR BREAKDOWN) . . . . .	1	NP	
	427-035-830-109	. STABILIZER INSTL, HORIZONTAL (S/N 56025 THRU 56040, 58001 THRU 58002) (SEE FIG. 53-34 FOR BREAKDOWN) . . . . .	1	NP	
	427-035-830-111	. STABILIZER INSTL, HORIZONTAL (S/N 56041 THRU SUB, 58003 THRU SUB) (SEE FIG. 53-34 FOR BREAKDOWN) . . . . .	1	NP	
25	MS21042L4	. NUT . . . . .	4	SP	
26	NAS1149D0432K	. WASHER (POST ASB 427-06-15) (NOTE 1) (S/N 56001 THRU SUB, 58001 THRU SUB) . . . . .	AR	SP	
27	NAS1149D0463K	. WASHER (POST ASB 427-06-15) (NOTE 1) (S/N 56001 THRU SUB, 58001 THRU SUB) . . . . .	AR	SP	
28	140-009D18C48	. WASHER . . . . .	4	SP	
29	NAS6604-30	. BOLT (POST ASB 427-06-15) (S/N 56001 THRU SUB, 58001 THRU SUB) . . . . .	4	SP	
30	427-035-840-105	. FIN ASSY, VERTICAL, TAILBOOM (SEE FIG. 53-36 FOR BREAKDOWN) (USBL ON 427-134-800-101) . . . . .	1	P	



(1) INDEX NUMBER	(2) PART NUMBER	(3) ITEM NAME	(4) UNIT PER ASSY	(5) A V A I L	(6) U O C
		<b>Figure 53-35. Tailboom and Empennage Installation (Cont'd)</b>			
30	427-035-840-109	. FIN ASSY, VERTICAL, TAILBOOM (SEE FIG. 53-36 FOR BREAKDOWN) (USBL ON 427-134-800-103 AND -105) . . . . .	1	NP	
31	42FLW-720	. NUT . . . . .	4	SP	
32	NAS1149G0732P	. WASHER (NOTE 1) . . . . .	AR	SP	
33	140-007-29S25E6	. WASHER . . . . .	4	SP	
34	NAS627-27	. BOLT . . . . .	4	SP	
35	427-034-801-109	. TAILBOOM ASSY (S/N 56001 THRU 56045, 58001 THRU 58002) (SEE FIG. 53-37, 53-38, 53-39 FOR BREAKDOWN) (REPLACED BY 427-034-801-111) . . . . .	1	NP	
35	427-034-801-111	. TAILBOOM ASSY (S/N 56046) (SEE FIG. 53-37, 53-38, 53-39 FOR BREAKDOWN) (REPLACES 427-034-801-109) (REPLACED BY 427-034-801-121) . . . . .	1	NP	
35	427-034-801-121	. TAILBOOM ASSY (S/N 56047 THRU SUB, 58003 THRU SUB) (SEE FIG. 53-37, 53-38, 53-39 FOR BREAKDOWN) (REPLACES 427-034-801-111) . . . . .	1	SP	
	427-706-800-101	KIT, FAIRING, TAIL ROTOR GEARBOX . . . . .	1	P	
36	MS27039C1-07	. SCREW . . . . .	6	SP	
37	NAS1149E0332R	. WASHER . . . . .	6	SP	
38	427-034-800-109	. ANGLE ASSY . . . . .	1	P	
39	CB6009CR3-1P	. NUTPLATE . . . . .	6	SP	
40	50-008R2C	. RECEPTACLE . . . . .	2	SP	
41	427-034-800-117	. ANGLE . . . . .	1	NP	
42	427-034-800-101	. LOWER PANEL ASSY . . . . .	1	SP	
43	50-008R2C	. RECEPTACLE . . . . .	2	SP	
44	427-034-800-105	. UPPER PANEL ASSY . . . . .	1	SP	
45	50-007A21C	. STUD . . . . .	2	SP	
46	50-009C2	. GROMMET . . . . .	4	SP	
47	50-010-3	. EJECTOR BLADE . . . . .	4	SP	
48	50-007A27C	. STUD . . . . .	2	SP	
49	50-005A20C	. STUD . . . . .	4	SP	
50	50-009C5	. GROMMET . . . . .	4	SP	
51	50-010-5	. EJECTOR BLADE . . . . .	4	SP	
52	427-034-800-107	. SPLICE ASSY . . . . .	1	SP	
53	50-008RF5C	. RECEPTACLE . . . . .	2	SP	
54	427-034-800-115	. SPLICE . . . . .	1	NP	
		NOTE 1: QUANTITY TO BE DETERMINED AT INSTALLATION REFER TO BHT-427-MM.			
		<b>AVAIL CODE      DEFINITION</b>			
		P                    Procurable			
		NP                  Non Procurable			
		SP                  Normal Stock/Procurement			
		Please see Chapter 1 for additional information on availability codes as well as general use of the Illustrated Parts Breakdown manual.			



427IPB\_53000\_00360\_001\_C02

Figure 53-36. Fin assembly, verticle, tailboom