

Bell Helicopter **TEXTRON**

A Subsidiary of Textron, Inc.

April 14, 2005

INFORMATION LETTER 206-05-91
206L-05-77

TO: All Owners/Operators of Bell 206A/B/L series Helicopters

SUBJECT: 206-033-426-001 AND -003, INSPECTION OF TAIL ROTOR GEARBOX SUPPORT ASSEMBLY

This info letter is issued to stress the importance of a good visual inspection when handling parts or components.

As an example, Bell Helicopter has received report of a cracked 206-033-426-001 tail rotor gearbox support assembly. The subject crack was located at the aft outboard right hand stud hole. Thread marks worn into the bore of the stud hole were observed, see Figure 1. After evaluation, it has been determined that the crack originated at the thread marks in the stud hole.

In this situation, it is prudent to verify the condition of the bore of the gearbox at the tail rotor gearbox install or replacement. Check the perpendicularity of the tail rotor gearbox case studs using a square between the case studs and mounting pad. Damage is frequently reported during handling or removal of the gearbox. A bent stud will score the casing and shall result in the replacement of the stud or casing.

In result of the above statement, it is recommended to visually inspect the components for signs of damage and distortion at removal or installation.

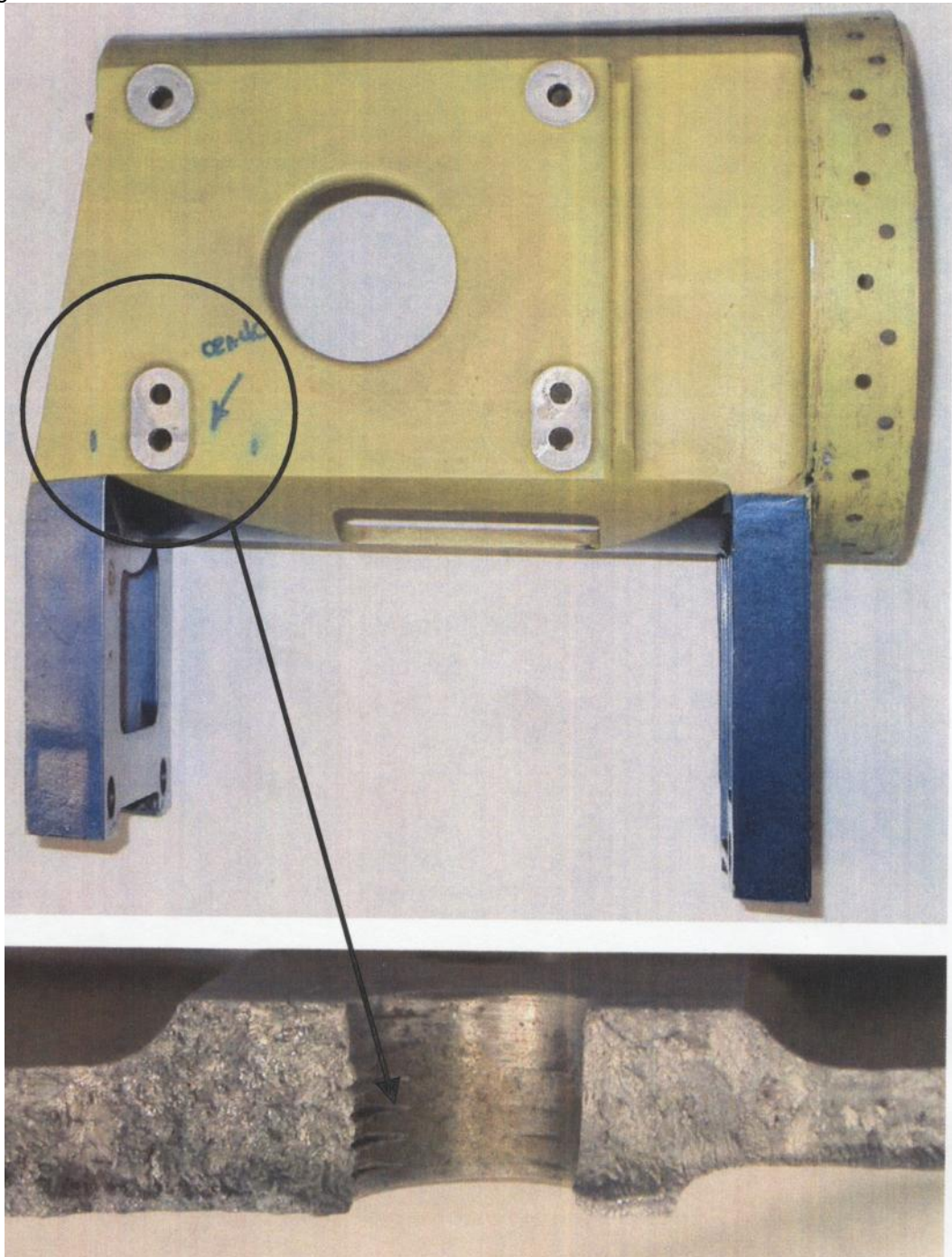


Figure 1: View of wear inside the bore at the cracked bolt hole.