

# **Bell Helicopter** **TEXTRON**

A Subsidiary of Textron, Inc.

JAN 26, 2005

**INFORMATION LETTER** 212-05-57  
412-05-57  
412CF-05-18

**TO: All Owners/Operators of Bell 212 Helicopters (modified under Service Instruction 212-83) and Bell 412/412CF series Helicopters**

**SUBJECT: CREW SEATS P/N 412-070-810-ALL: NOTIFICATION OF POSSIBLE DAMAGE TO SEAT ATTENUATOR GUIDE PIN P/N 222-620-821-101**

It has been brought to the attention of Bell Helicopter Textron that during an unscheduled inspection of a Bell 412 crew seat, the attenuator guide pin was found bent (see Figure 2).

This Information Letter is issued to remind all 412 operators that the adjustment of the crew seats vertical height without personnel controlling the upward motion (no weight on seat) will result in guide pin damage. The seat attenuator internal spring assists personnel when the seat vertical position is adjusted. The external guide pin P/N 222-620-821-101 will limit upward movement of the seat but damage will result if upward velocity is not controlled. The 412 maintenance manual warns operators to this effect.

The damage seen in Figure 2 was determined to have no effect on the attenuating capability of the seat. However, if heavy contact is suspected, pin should be removed, inspected and replaced as required.

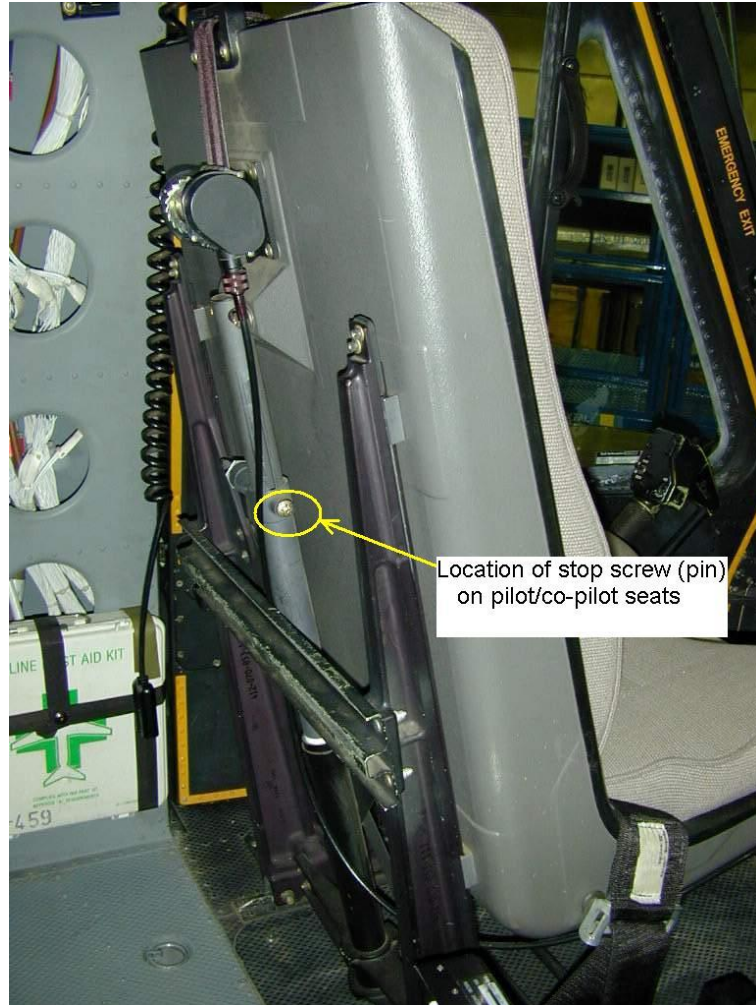


FIGURE 1: Co-pilot seat shown

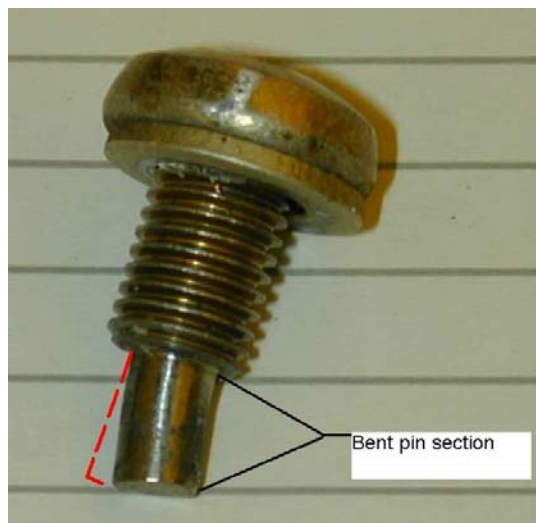


FIGURE 2: Observed damage to pin