



A Subsidiary of Textron, Inc.

April 12, 2007

INFORMATION LETTER 407-07-93

TO: All Owners/Operators of Bell 407 Helicopters.

SUBJECT: SHEAR BEARING P/N 407-310-101-ALL

Bell Helicopter Product Support Engineering has received several requests concerning the serviceability of subject shear bearings.

Some operators report misalignment of the radial injection lines on shear bearings outboard surface while the same injection lines on bearing inboard surface are aligned.

This information letter is issued to inform owners and operators that misalignment of the radial injection lines on the shear bearing outboard surface alone is not a cause for rejection.

The outboard side of the shear bearing is manufactured with multiple sets of mold inserts which do not need to be aligned. On the contrary, the opposite side of the bearing (inboard side) uses one set of inserts and the "lines" should be aligned. Refer to figure 1 for additional details.

Shear bearings with misaligned radial injection lines on outboard surface may remain in service provided they meet the criteria listed in applicable maintenance and overhaul manuals.

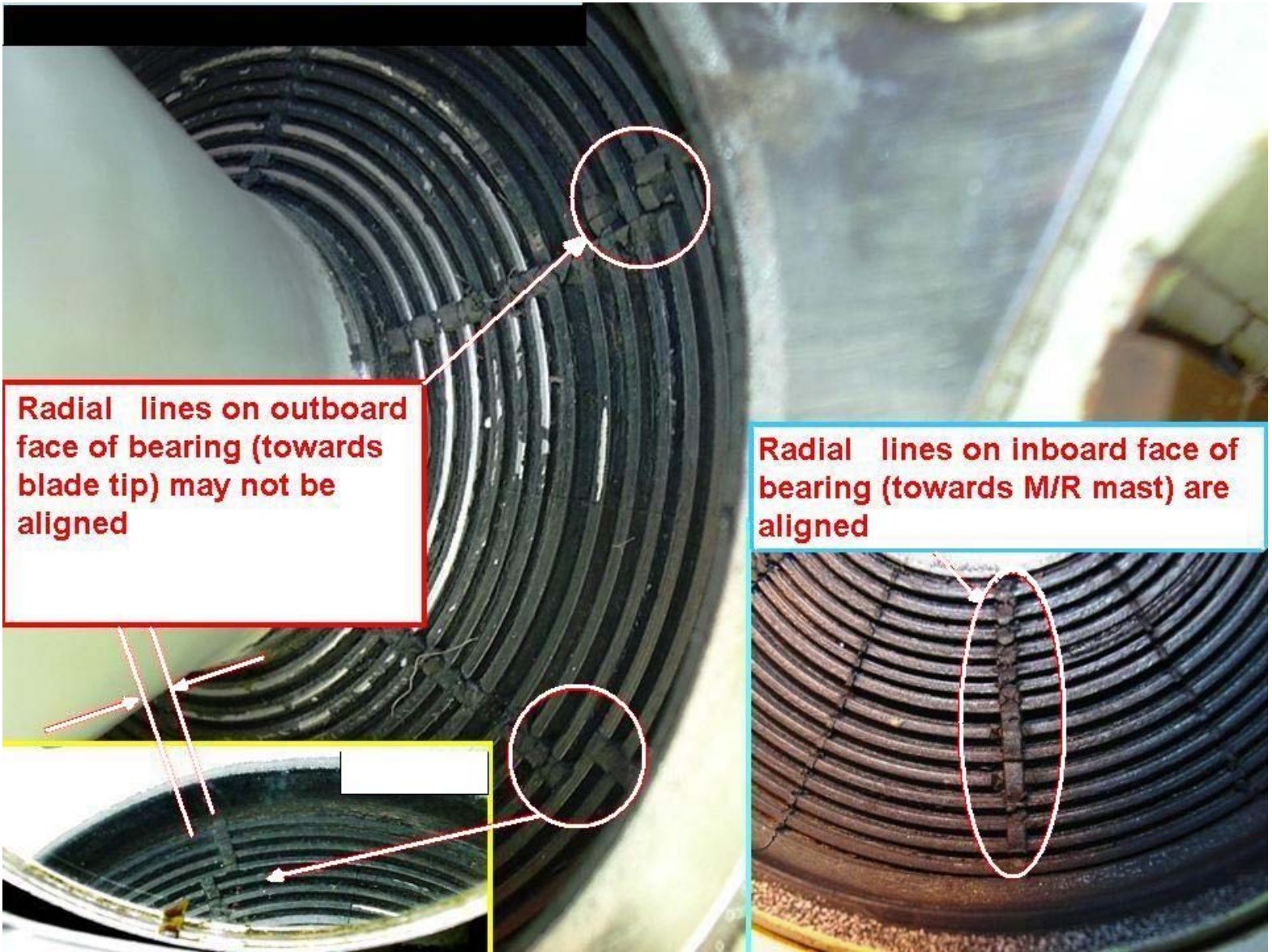


Figure 1