

TECHNICAL BULLETIN
Bell Helicopter **TEXTRON**

A Subsidiary of Textron Inc.

No. 214ST-01-165

Date 04-02-01

Page 1 of 5

DATE
REV

MODEL AFFECTED: 214ST

SUBJECT: BL 14.0 LEFT AND RIGHT HAND MAIN BEAM ASSEMBLIES, FS 227.10 CENTER BULKHEAD ASSEMBLY, AND FS 255.20 AFT CABIN BULKHEAD ASSEMBLY, ADDITIONAL MAINTENANCE MANUAL INSPECTION REQUIREMENTS

HELICOPTERS AFFECTED: ALL Model 214ST Helicopters

COMPLIANCE: Effective upon receipt of this Technical Bulletin

DESCRIPTION:

Service experience indicates that more specific inspection criteria is required to ensure continued airworthiness of the pylon support structure at FS 227.10 and at FS 255.20.

The 214ST Maintenance Manual "B" Inspection requirements, Pylon Compartment, are revised to include a specific visual inspection of the center bulkhead assembly at FS 227.10, the left and right hand main beam (BL 14.00) structure at FS 227.10 and FS 255.20, and the left hand aft cabin bulkhead at FS 255.20.

In addition, the "E" Inspection requirements, Forward Fuselage, are revised to include specific inspection tasks for those helicopters modified/repared with special repair fittings at FS 227.10, WL 65.00, RBL 14.00 (214-831-100) and at FS 255.20, WL 65.00, and LBL 14.00 (214-530-023).

APPROVAL:

Not required.

MANPOWER:

No significant additional man-hours will be required when accomplished as part of the normally required inspections.

MATERIALS:

None required.

SPECIAL TOOLS:

None required.

WEIGHT AND BALANCE:

Not affected.

ELECTRICAL LOAD DATA:

Not affected.

REFERENCES:

BHT-214ST-IPC Illustrated Parts Breakdown, Chapter 53
BHT-214ST-MM Maintenance Manual, Chapter 5

PUBLICATIONS AFFECTED:

BHT-214ST-MM Maintenance Manual, Chapter 5

ACCOMPLISHMENT INSTRUCTIONS:

- NOTE -

Refer to Figure 1

1. Refer to 214ST Maintenance Manual, Chapter 5, Scheduled Inspections, "B" Inspection:

Revise Paragraph 5-8, PYLON COMPARTMENT by adding sub-paragraph 6A. as shown below:

6A. Visually inspect pylon support structure as follows:

- a. The FS 227.10 center Bulkhead Assembly (P/N 214-031-209) for cracks, particularly in the area adjacent to WL 65.0. The forward support Beam (P/N 214-031-202) at FS 227.10, WL 65.00 for cracks in the bend radius/joggle and for loose fasteners.
- b. The lower forward corner of the right hand pylon support Fitting (P/N 214-031-492) at FS 227.10, RBL 14.00, WL 65.00, for cracks and loose fasteners in the vertical attach leg and along the right hand pylon access panel upper attach flange.
- c. The left hand FS 255.20 aft cabin Bulkhead (P/N 214-031-253) for cracks, paying particular attention to the inboard edge at WL 65.0.
- d. The lower rear corner of the left hand pylon support Fitting (P/N 214-031-492) at FS 255.20, LBL 14.00, WL 65.00, for cracks and loose fasteners in the horizontal and vertical attach legs.

2. Refer to 214ST Maintenance Manual, Chapter 5, Scheduled Inspections, "E" Inspection:

Revise Paragraph 5-11, MAIN FUSELAGE by adding the note and sub-paragraph 12A. as shown below:

- NOTE -

The following tasks are in addition to those noted in subparagraphs 12 and 13 and apply only to those helicopters modified with special repair fittings at FS 227.10, RBL 14.00, WL 65.00 (P/N 214-830-100) and/or FS 255.20, LBL 14.00, and WL 65.0 (P/N 214-530-023). Removal of the transmission assembly is required to accomplish these tasks.

12A. Visually inspect pylon support structure as follows:

- a. At FS 227.10, RBL 14.00, WL 65.00, inspect the repair fitting and adjacent structure for cracks and loose fasteners. Inspect doubler (if installed) on the forward face of the FS 227.10 center Bulkhead Assembly (P/N 214-031-209) at WL 65.00 for voiding, cracks, or loose fasteners.

- b. At FS 255.20, LBL 14.00, WL 65.00, inspect inboard and outboard faces of the “crucifix” fitting for cracks and loose fasteners paying particular attention to the fitting leg at WL 65.0, inboard of LBL 14.0 and aft of FS 255.20. Inspect the left hand main beam upper cap (WL 65.0) aft of FS 255.20 and the left hand beam web aft of FS 255.20, and between WL 65.0 and WL 53.0, for cracks and loose fasteners.

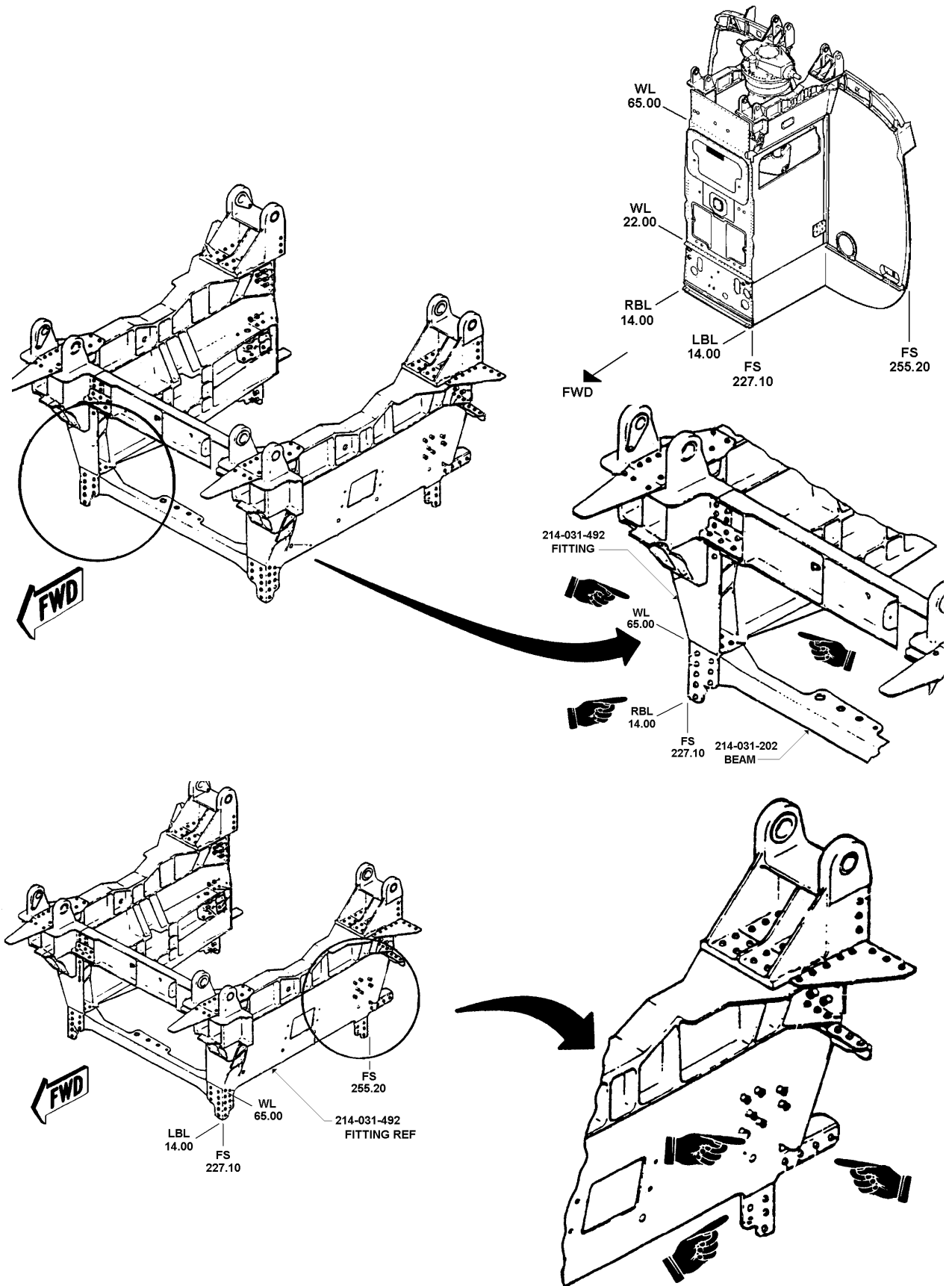


FIGURE 1