

TECHNICAL BULLETIN
Bell Helicopter **TEXTRON**

A Subsidiary of Textron Inc.

No. 222-01-168

Date 04-16-01

Page 1 of 5

DATE
REV

MODEL AFFECTED: 222 and 222B

SUBJECT: FUEL VENT ASSEMBLY P/N 430-060-004-101,
INTRODUCTION OF

HELICOPTERS AFFECTED: Model 222 helicopters serial number 47006 through 47089.

Model 222B helicopters serial number 47131 through 47156.

COMPLIANCE: At customer's option

DESCRIPTION:

Bell Helicopter has received reports of reduced fuel capacity as a result of fuel cell distortion caused by incorrect installation of the fuel vent assembly on the prime pump plate. The fuel vent is designed to be installed with the scarf cut facing relative wind (forward). Installation of the vent with the scarf facing aft produces negative pressure on the fuel system in forward flight and may cause distortion of the fuel cell(s). The new fuel vent assembly is designed to prevent incorrect installation.

This bulletin includes installation procedure for the new vent assembly and provides instructions to modify existing fuel vent assemblies to the configuration of fuel vent assembly P/N 430-060-004-101.

APPROVAL:

The engineering design aspects of this bulletin are Transport Canada approved.

MANPOWER:

Approximately 1 man-hour is required to complete this bulletin. Man-hours are based on hands-on time, and may vary with personnel and facilities available.

MATERIALS:

Required Material:

The following material is required for the accomplishment of this bulletin and may be obtained through your Bell Helicopter Textron Supply Center.

<u>Part Number</u>	<u>Nomenclature</u>	<u>Quantity</u>
430-060-004-115	Bracket	2

Bracket P/N 430-060-004-115 is required to modify existing fuel vent assembly P/N 222-066-605-101. Fuel vent assembly P/N 430-060-004-101 is the current spare replacement.

Consumable Material:

The following material is required to accomplish this bulletin, however this material is considered consumable (bench stock) material and may not require ordering depending on the operators consumable material stock levels. This material may be obtained through your Bell Helicopter Textron Supply Center.

<u>Part Number</u>	<u>Nomenclature</u>	<u>Reference</u>
MILS8802CLB2 6OZ	Sealant	C-308

SPECIAL TOOLS:

None required

WEIGHT AND BALANCE:

Not affected

ELECTRICAL LOAD DATA:

Not affected

REFERENCES:

BHT-222/222B-MM-1, Chapter 28

PUBLICATIONS AFFECTED:

BHT-222/222B-MM-1, Chapter 28
BHT-222-IPB, Chapter 28
BHT-222B-IPB, Chapter 28

ACCOMPLISHMENT INSTRUCTIONS:

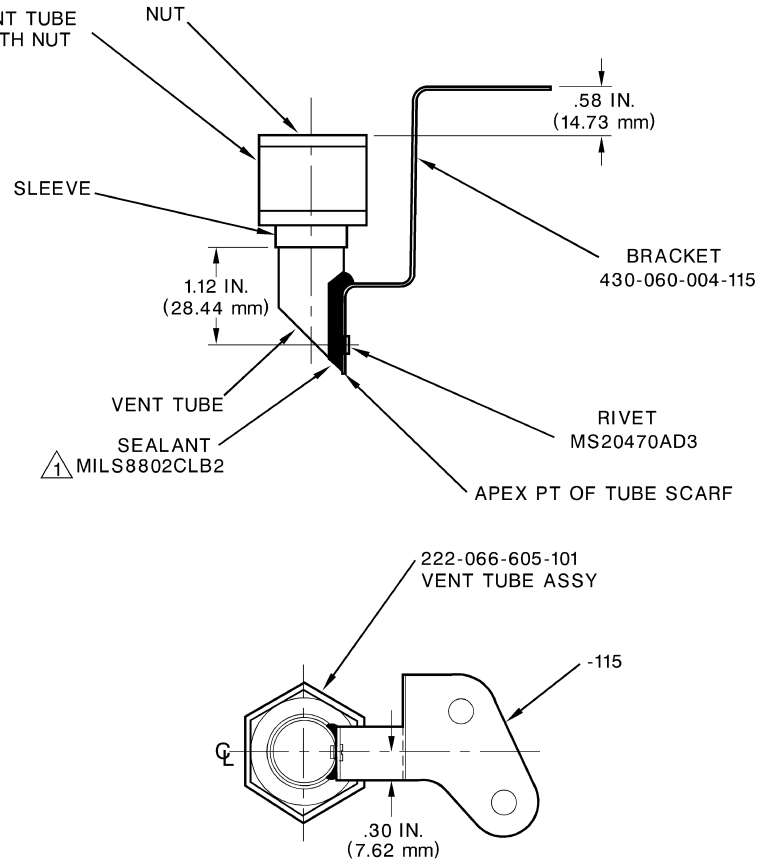
1. Remove existing fuel vent assembly P/N 222-066-605-101 from the prime pump plate. Refer to BHT-222/222B-MM-1, Chapter 28.
2. Modify fuel vent assembly as follows:
 - a) Ensure sleeve and vent tube is fully seated into the nut.
 - b) Install bracket on the vent tube using rivet MS20470AD3-length. Refer to figure 1 for details and dimensions.
 - c) Apply sealant (C-308) to fill the space between vent tube and bracket. Refer to figure 1.

-NOTE-

Installation of fuel vent assembly P/N 430-060-004-101 on the prime pump plate will identify which retaining bolts to be removed.

3. Remove two (2) prime pump plate retaining bolts and washers. Install modified fuel vent assembly or a new fuel vent assembly P/N 430-060-004-101 on the prime pump plate. Install retaining bolts and washers, previously removed, through the bracket and into the prime pump plate. Refer to BHT-222/222B-MM-1, Chapter 28 and figure 2.
4. Annotate aircraft records to reflect compliance with this bulletin.

ENSURE SLEEVE & VENT TUBE
ARE FULLY SEATED WITH NUT



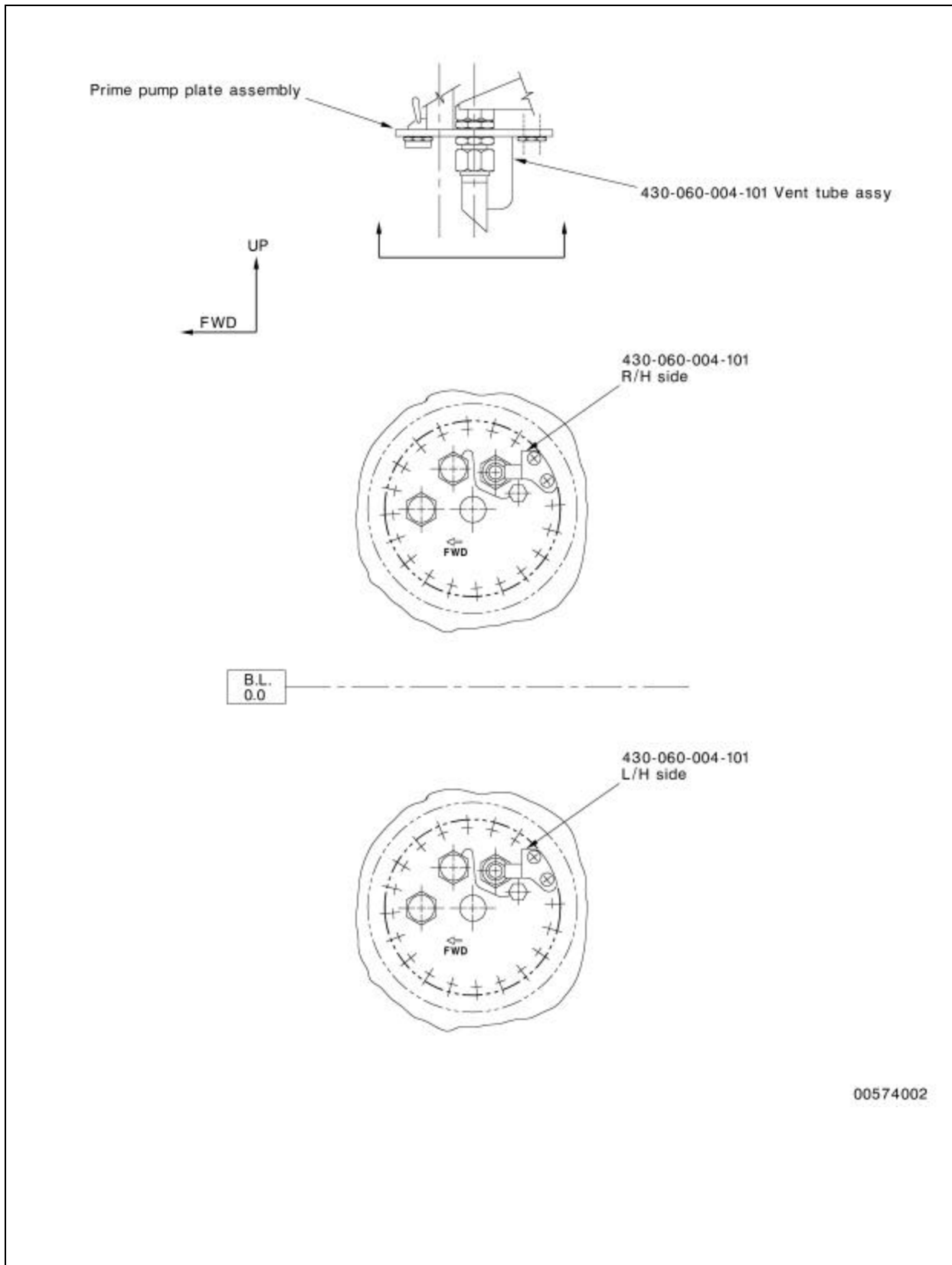
NOTE

1 Apply MILS8802CLB2 (C-308) sealant to fill space between the vent tube and the bracket.

00574001

222-066-605-101
VENT TUBE ASSY

Figure 1. Vent Tube Modification



00574002

Figure 2. Vent Tube Installation