

**TECHNICAL BULLETIN**  
**Bell Helicopter** **TEXTRON**

A Subsidiary of Textron Inc.

No. 222U-01-93

Date 04-16-01

Page 1 of 5

DATE
REV

**MODEL AFFECTED:** 222U

**SUBJECT:** FUEL VENT ASSEMBLY P/N 430-060-004-101,  
INTRODUCTION OF

**HELICOPTERS AFFECTED:** Model 222U helicopters serial number 47501  
through 47574.

**COMPLIANCE:** At customer's option

**DESCRIPTION:**

Bell Helicopter has received reports of reduced fuel capacity as a result of fuel cell distortion caused by incorrect installation of the fuel vent assembly on the prime pump plate. The fuel vent is designed to be installed with the scarf cut facing relative wind (forward). Installation of the vent with the scarf facing aft produces negative pressure on the fuel system in forward flight and may cause distortion of the fuel cell(s). The new fuel vent assembly is designed to prevent incorrect installation.

This bulletin includes installation procedure for the new vent assembly and provides instructions to modify existing fuel vent assemblies to the configuration of fuel vent assembly P/N 430-060-004-101.

**APPROVAL:**

The engineering design aspects of this bulletin are Transport Canada approved.

**MANPOWER:**

Approximately 1 man-hour is required to complete this bulletin. Man-hours are based on hands-on time, and may vary with personnel and facilities available.

**MATERIALS:**

**Required Material:**

The following material is required for the accomplishment of this bulletin and may be obtained through your Bell Helicopter Textron Supply Center.

<u>Part Number</u>	<u>Nomenclature</u>	<u>Quantity</u>
430-060-004-115	Bracket	2

Bracket P/N 430-060-004-115 is required to modify existing fuel vent assembly P/N 222-066-605-101. Fuel vent assembly P/N 430-060-004-101 is the current spare replacement.

**Consumable Material:**

The following material is required to accomplish this bulletin, however this material is considered consumable (bench stock) material and may not require ordering depending on the operators consumable material stock levels. This material may be obtained through your Bell Helicopter Textron Supply Center.

<u>Part Number</u>	<u>Nomenclature</u>	<u>Reference</u>
MILS8802CLB2 6OZ	Sealant	C-308

**SPECIAL TOOLS:**

None required

**WEIGHT AND BALANCE:**

Not affected

**ELECTRICAL LOAD DATA:**

Not affected

**REFERENCES:**

BHT-222U-MM-4, Chapter 28

**PUBLICATIONS AFFECTED:**

BHT-222U-MM-4, Chapter 28

**ACCOMPLISHMENT INSTRUCTIONS:**

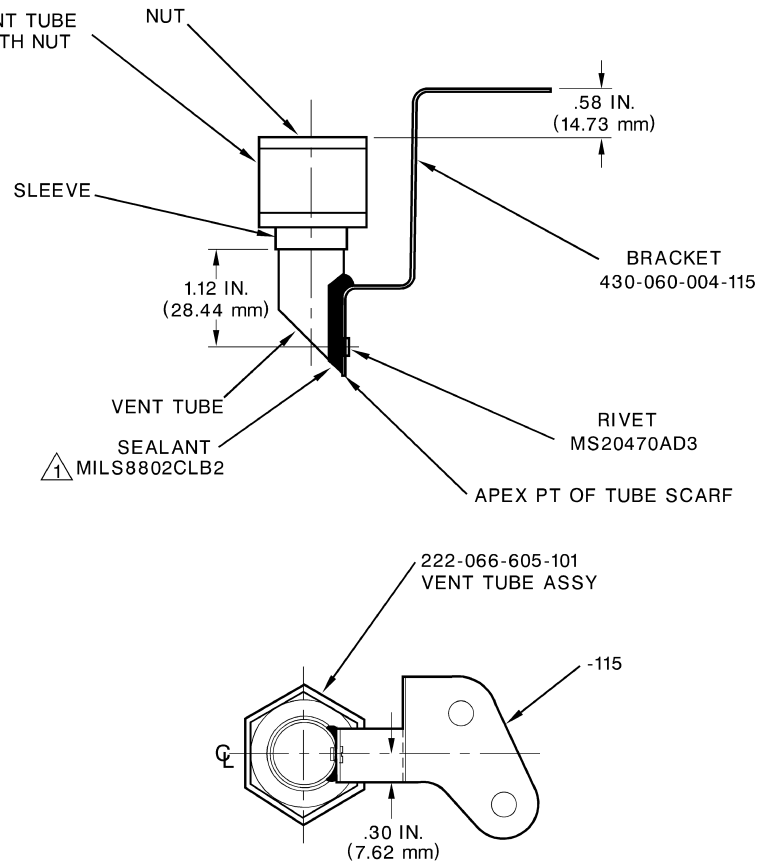
1. Remove existing fuel vent assembly P/N 222-066-605-101 from the prime pump plate. Refer to BHT-222U-MM-4, Chapter 28.
2. Modify fuel vent assembly as follows:
  - a) Ensure sleeve and vent tube is fully seated into the nut.
  - b) Install bracket on the vent tube using rivet MS20470AD3-length. Refer to figure 1 for details and dimensions.
  - c) Apply sealant (C-308) to fill the space between vent tube and bracket. Refer to figure 1.

**-NOTE-**

Installation of fuel vent assembly P/N 430-060-004-101 on the prime pump plate will identify which retaining bolts to be removed.

3. Remove two (2) prime pump plate retaining bolts and washers. Install modified fuel vent assembly or a new fuel vent assembly P/N 430-060-004-101 on the prime pump plate. Install retaining bolts and washers, previously removed, through the bracket and into the prime pump plate. Refer to BHT-222U-MM-4, Chapter 28 and figure 2.
4. Annotate aircraft records to reflect compliance with this bulletin.

ENSURE SLEEVE & VENT TUBE  
ARE FULLY SEATED WITH NUT



**NOTE**

1 Apply MILS8802CLB2 (C-308) sealant to fill space between the vent tube and the bracket.

00574001

222-066-605-101  
VENT TUBE ASSY

Figure 1. Vent Tube Modification

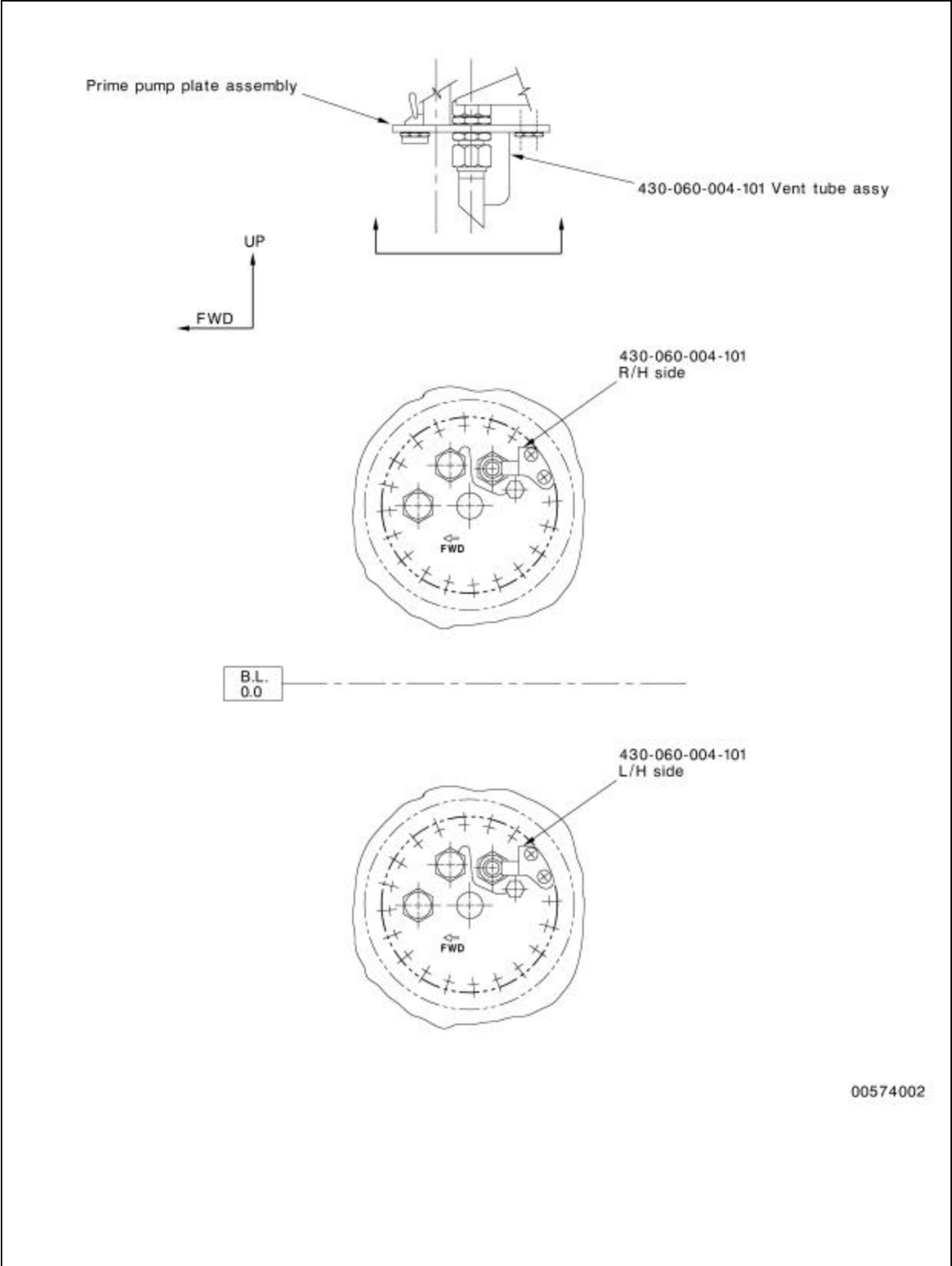


Figure 2. Vent Tube Installation