

TECHNICAL BULLETIN
Bell Helicopter **TEXTRON**

A Subsidiary of Textron Inc.

No. 407-03-45

Date 10-29-03

Page 1 of 7

DATE
REV

MODEL AFFECTED: 407

SUBJECT: COLOR CREW SEAT BELT, RESTRAINTS
222-320-823-129 / -130, INTRODUCTION OF

HELICOPTERS AFFECTED: 407 helicopters, ALL

COMPLIANCE: At the option of the customer

DESCRIPTION:

Bell Helicopter mandated bulletin ASB 407-99-29 for the replacement of seat belt 407-370-723-101/-103 by improved seat belts 222-320-823-129/ -130. The replacement seat belt restraints were available in black only.

This Technical Bulletin introduces and gives instructions to order seatbelt 222-320-823-129/ -130 in colors to match with the corporate interior.

APPROVAL:

The engineering design aspects of this bulletin are Transport Canada approved.

MANPOWER:

Approximately 2.0 man-hours are required to complete this bulletin. Man-hours are based on hands-on time, and may vary with personnel and facilities available.

MATERIALS:

Required Material:

The following part may be obtained through your Bell Helicopter Textron Supply Center.

<u>Part number</u>	<u>Nomenclature</u>	<u>Quantity</u>
222-320-823-129 (See Note 1)	Restraint assy, L/H	1
222-320-823-130 (See Note 1)	Restraint assy, R/H	1

Note 1: When ordering the part, use the appropriate letter code suffix at the end of the basic number to obtain the desired color.

The letter codes match with a color as follows:

Letter code	Color
No code	Black
B	Dark Blue
D	Red Burgundy
E	Saddle
H	Mushroom
J	Forest Green
L	Smoke Grey
M	Pewter

Consumable Material:

None

SPECIAL TOOLS:

None required

WEIGHT AND BALANCE:

Not affected

ELECTRICAL LOAD DATA:

Not affected

REFERENCES:

BHT-407-MM-3, Rev.17 – 25 Oct 2002
Chapter 25, Equipment/Furnishings, Paragraph, 25-11

ASB 407-99-29, date 05-10-99

PUBLICATIONS AFFECTED:

BHT-407-IPB, Rev 3 – 06 Sept 2002
Chapter 25, Equipment/Furnishings.

ACCOMPLISHMENT INSTRUCTIONS:

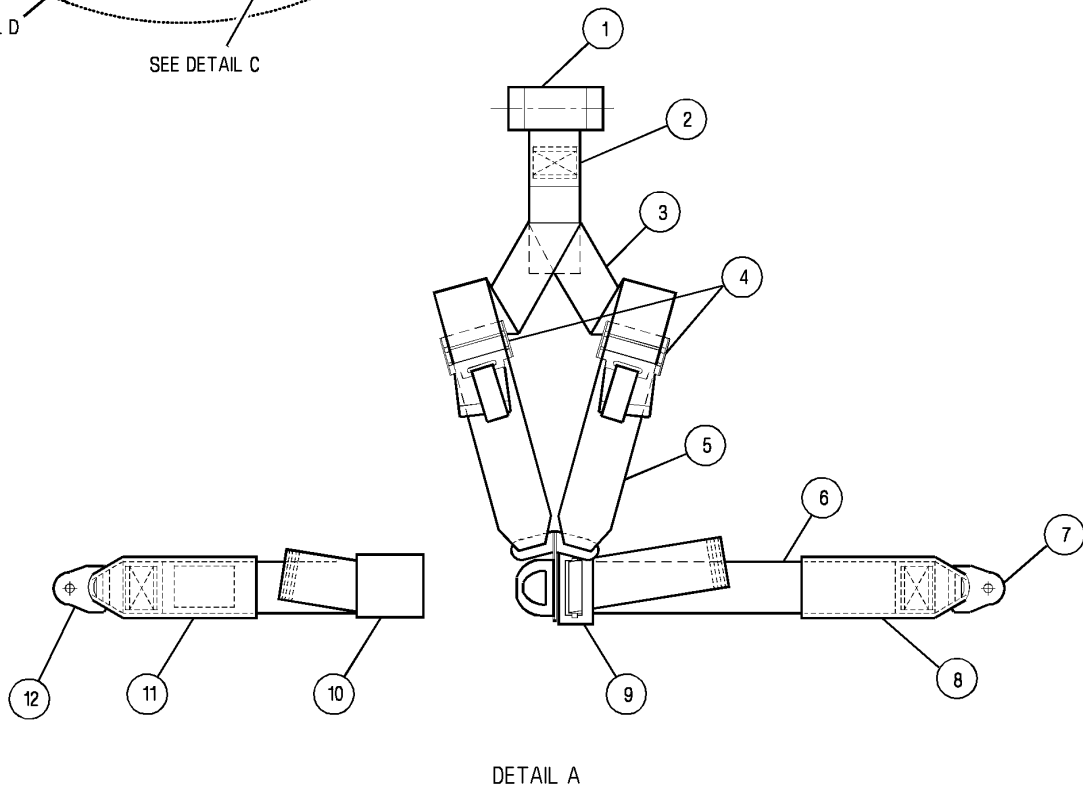
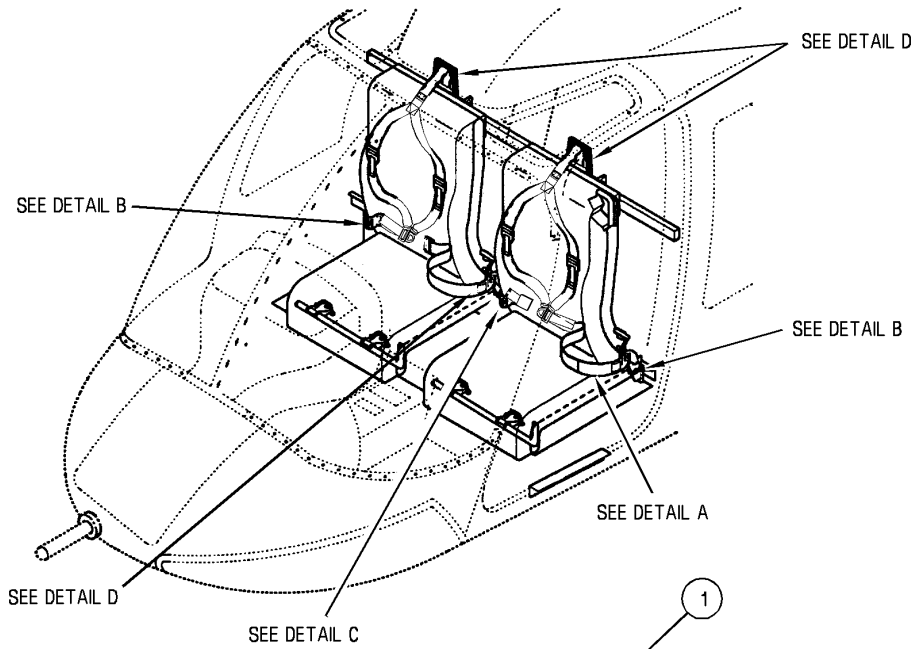
- 1) Remove interior trim as required to get access. Remove the left and the right crew seat restraints that are installed in the helicopter (refer to BHT-407-MM-3). Keep the attaching parts for subsequent installation.

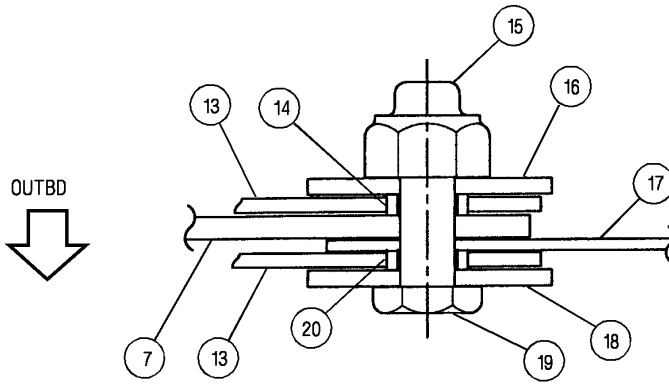
- NOTE -

This procedure is identical for the left and the right crew
seat restraint assemblies except for 2 b) and 2 c).

- 2) Install the inboard and outboard lap belt strap assemblies (6 and 11, Figure 1) as follows:
 - a) Refer to Detail B. Assemble the attachment of the outboard lap belt strap assembly (6) as follows
 - I) Put the washer (18) and spacer (20) on the bolt (19).
 - II) Position the outboard end fitting (7) with the seat belt support fitting (17). Make sure that the plastic sleeve (13) is correctly positioned on the outboard end fitting (7) and the seat belt support fitting (17).
 - III) Insert the bolt (19), with the washer (18) and the spacer (20), through the hole of the outboard end fitting (7) and its plastic sleeve (13), and the seat belt support fitting (17).
 - IV) Install the spacer (14), the washer (16) and the nut (15). Tighten the nut (15).

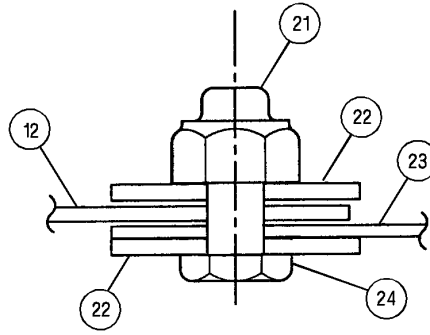
- b) Refer to Detail C. Assemble the attachment of the L/H inboard lap belt assembly (11) as follows:
 - I) Position the inboard end fitting (12) on the seat belt support fitting (23). Install the bolt (24) with washer (22) under head.
 - II) Install the washer (22), and the nut (21) on the bolt (24). Tighten the nut (21).
- c) Refer to Detail D. Assemble the attachment of the R/H inboard lap belt assembly (11) as follows:
 - I) Position the inboard end fitting (12) on the seat belt support fitting (23). Install the bolt (24) with washer (22) under head and tighten.
- 3) Refer to Detail E. Install the shoulder harness (2) on the headrest support assembly (32) as follows:
 - a) Install the two pins at the bottom of the headrest support assembly (32) into the two holes on the bulkhead.
 - b) On the left headrest support assembly, tighten the two Dzus fasteners (33) to secure the headrest support assembly (32).
 - c) On the right headrest support assembly, install the two washers (35) and screws (34).
 - d) Install the inertia reel (1) of the shoulder harness (2) with two screws (31).
 - e) Install the spacer (27) under the webbing of the shoulder harness (2). Ensure to install the aluminum washers (28) outboard of the headrest support (32) and nylon washers (26) between spacer (27) and headrest support (32). Insert the pin (25) through the washers (26 and 28), the headrest support (32), and the spacer (27). Secure the pin (25) with cotter pin (29).
 - f) Install the shoulder harness on the seat. Attach the connector (9) to the buckle (10).
 - g) Install the headrest (30) on the headrest support assy (32).
 - h) Reinstall interior trim as required.
- 4) Install the parts removed in Step 1 above.





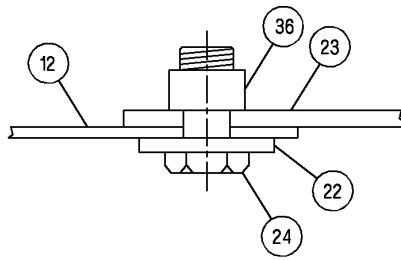
DETAIL B

LH SEAT OUTBOARD LAP BELT ATTACHMENT SHOWN
RH SEAT OUTBOARD LAP BELT ATTACHMENT OPPOSITE



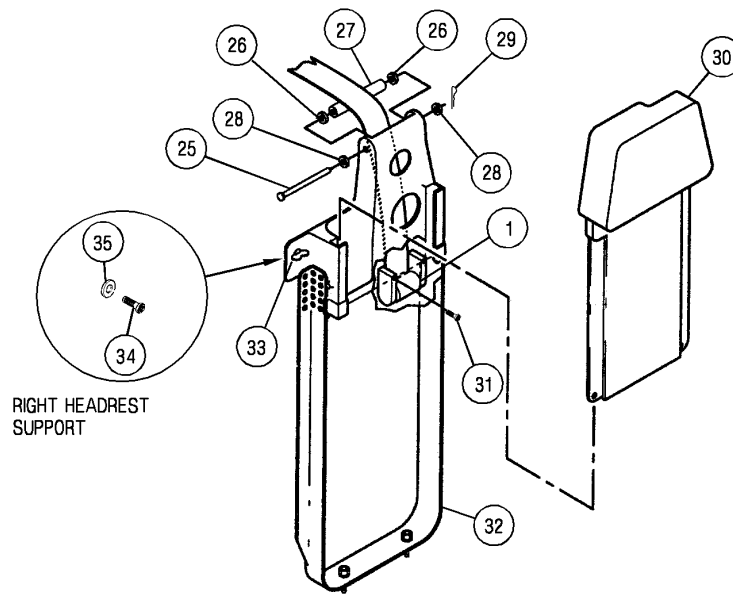
DETAIL C

LH SEAT INBOARD LAP BELT ATTACHMENT



DETAIL D

RH SEAT INBOARD LAP BELT ATTACHMENT



DETAIL E

LEFT HEADREST SUPPORT ASSEMBLY

LEGEND

- | | | | |
|-----|---------------------------------|-----|---------------------------|
| 1. | Inertia reel | 21. | Nut |
| 2. | Shoulder harness webbing | 22. | Washer |
| 3. | Shoulder harness, shoulder belt | 23. | Seat belt support fitting |
| 4. | Adjuster | 24. | Bolt |
| 5. | Strap assembly | 25. | Pin |
| 6. | Outboard lapbelt strap | 26. | Nylon washer |
| 7. | Outboard end fitting | 27. | Spacer |
| 8. | Protection sheath | 28. | Aluminum washer |
| 9. | Connector | 29. | Cotter pin |
| 10. | Buckle | 30. | Headrest |
| 11. | Inboard lapbelt strap | 31. | Screw |
| 12. | Inboard end fitting | 32. | Headrest support assembly |
| 13. | Plastic sleeve | 33. | DZUS Fastener |
| 14. | Spacer | 34. | Screw |
| 15. | Nut | 35. | Washer |
| 16. | Washer | 36. | Nutplate |
| 17. | Seat belt support fitting | | |
| 18. | Washer | | |
| 19. | Bolt | | |
| 20. | Spacer | | |