

TECHNICAL BULLETIN

429-17-52
25 May 2017

MODEL AFFECTED: 429

SUBJECT: INTEGRATED HYDRAULIC MODULE (IHM)
CONNECTOR DECALS, RELOCATION OF

HELICOPTERS AFFECTED: Serial numbers 57001 through 57301, 57303, 57304, 57306, 57308 through 57313, 57316, 57317, 57319.

[Serial number 57302, 57305, 57307, 57314, 57315, 57318, 57320 and subsequent will have the intent of this bulletin accomplished prior to delivery.]

COMPLIANCE: At customer's option.

DESCRIPTION:

Bell Helicopter has received reports of damaged integrated hydraulic module electrical receptacles, caused by the mixing of the two connectors. This Technical Bulletin provides operators instructions to install locally fabricated identification markings to reduce the risk of installing the connectors in the wrong location.

Applicability of this bulletin to any spare part shall be determined prior to its installation on an affected helicopter.

APPROVAL:

The engineering design aspects of this bulletin are Transport Canada Civil Aviation (TCCA) approved.

CONTACT INFO:

For any questions regarding this bulletin, please contact:

Bell Helicopter Product Support Engineering - Intermediate Helicopters
Tel: 450-437-2077 / 1-800-463-3036 / pseinter@bh.com

MANPOWER:

Approximately 2.0 man-hours are required to complete this bulletin. This estimate is based on hands-on time and may vary with personnel and facilities available.

WARRANTY:

There is no warranty credit applicable for parts or labor associated with this bulletin.

MATERIAL:

Required Material:

The following material is required for the accomplishment of this bulletin and may be obtained through your Bell Helicopter Textron Supply Center.

<u>Part Number</u>	<u>Nomenclature</u>	<u>Qty (Note)</u>
31-065-2910L1P1	Decal	1 (1)
31-065-2910L1P2	Decal	1 (1)
31-065-2910L2P1	Decal	1 (1)
31-065-2910L2P2	Decal	1 (1)

NOTE 1: Decal may be locally manufactured using information in Figure 1

Consumable Material:

The following material is required to accomplish this bulletin, but may not require ordering, depending on the operator's consumable material stock levels. This material may be obtained through your Bell Helicopter Textron Supply Center.

<u>Part Number</u>	<u>Nomenclature</u>	<u>Qty (Note)</u>	<u>Reference *</u>
2010-06640-00	Edge Sealer	A/R	C-349
2100-06673-00	Isopropyl Alcohol	A/R	C-285

* C-XXX numbers refer to the consumables list in the BHT-ALL-SPM, Standard Practices Manual

SPECIAL TOOLS:

None required.

WEIGHT AND BALANCE:

Not affected.

ELECTRICAL LOAD DATA:

Not affected.

REFERENCES:

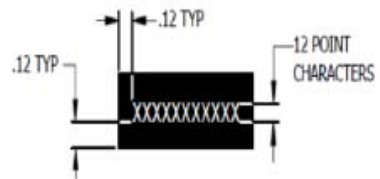
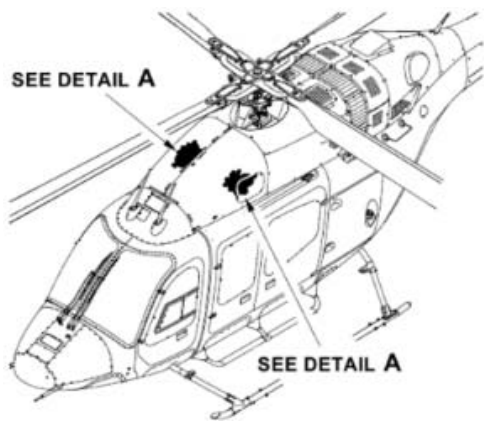
BHT-429-IPB, Illustrated Parts Breakdown
BHT-429-MM, Maintenance Manual

PUBLICATIONS AFFECTED:

BHT-429-IPB, Illustrated Parts Breakdown, Chapter 29.

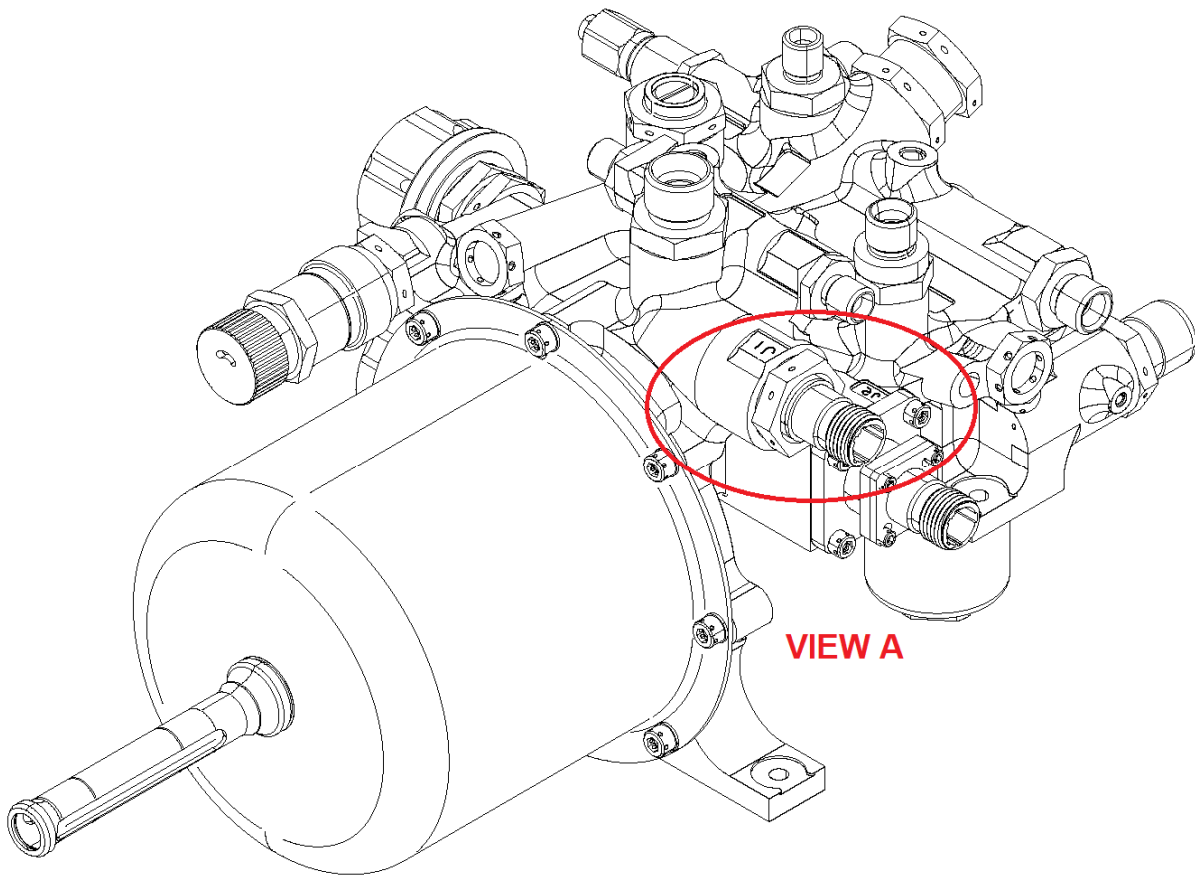
ACCOMPLISHMENT INSTRUCTIONS:

1. Prepare the helicopter for maintenance.
2. Remove the applicable forward cowl assembly (600CL) on the left side and (600CR) on the right side (BHT-429-MM-1, Chapter 53).
3. Disconnect the battery and the external DC power from the helicopter.
4. Gain access to the Integrated Hydraulic Module (IHM) on the left side.
5. Locate the J1 and J2 identification mark on the (IHM) for the hydraulic system #1. (Figure 1, View A)
6. Clean the area at the J1 and J2 mark using Isopropyl Alcohol (C-285). Let dry.
7. Install decal 2910L1P1 near the J1 area and 2910L1P2 near the J2 area (Figure 2)
8. Gain access to the IHM on the right side.
9. Locate the J1 and J2 identification mark on the IHM for the hydraulic system #2. (Figure 1, View A)
10. Clean the area at the J1 and J2 area using isopropyl alcohol (C-285). Let dry.
11. Install decal 2910L2P1 near the J1 area and 2910L2P2 near the J2 area (Figure 3)
12. Overcoat all installed decals with one coat of clear epoxy (C-298) and let cure
13. Connect the battery and the external DC power from the helicopter.
14. Install the applicable forward cowl assembly (600CL) on the left side and (600CR) on the right side (BHT-429-MM-1, Chapter 53).
15. Make an entry in the helicopter logbook and historical service records indicating compliance with this Technical Bulletin.



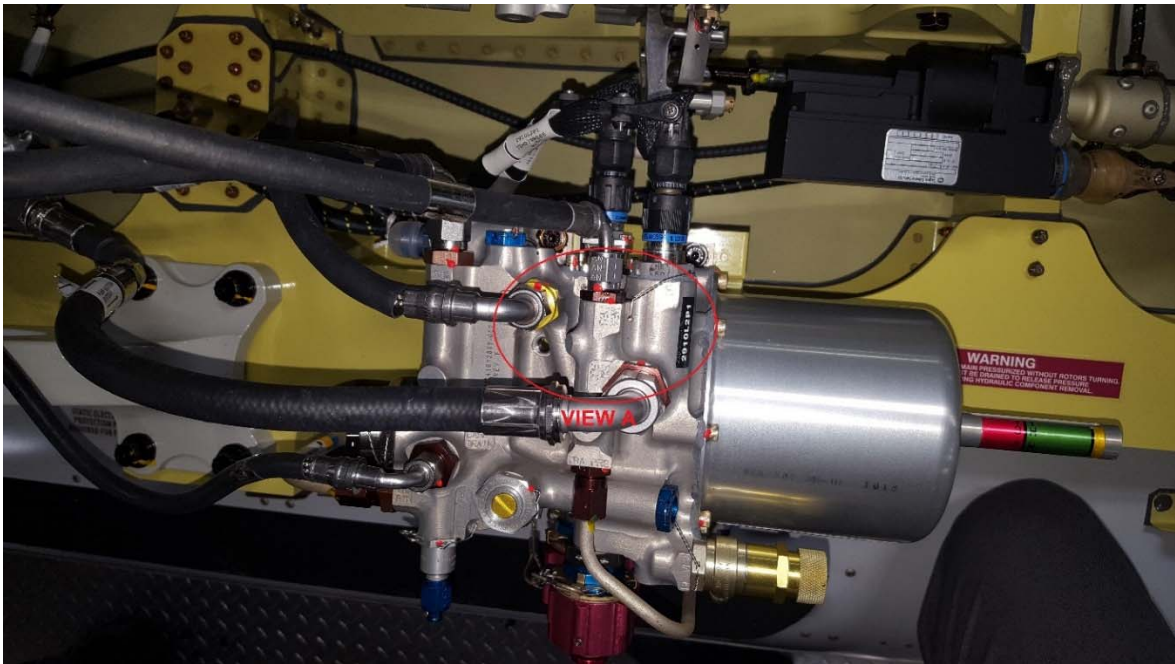
black background decal with white lettering

decal detail

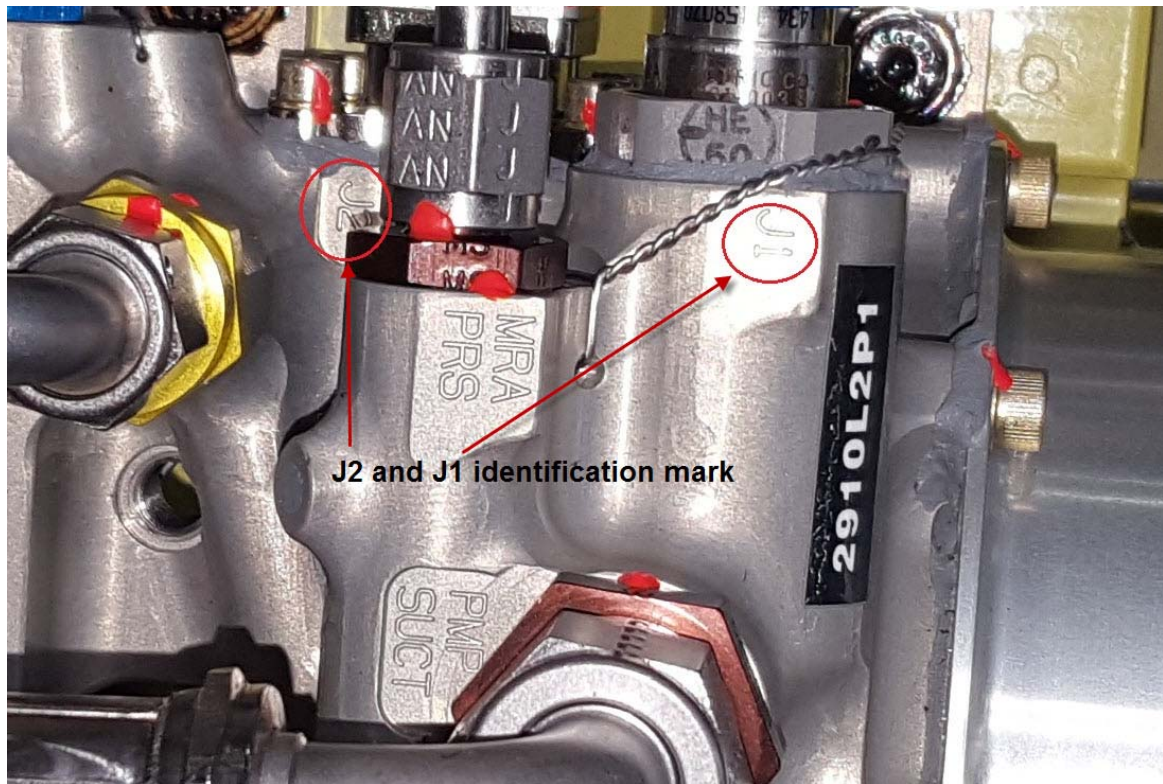


DETAIL A

Figure 1 – IHM Identification Mark (Sheet 1 of 2)



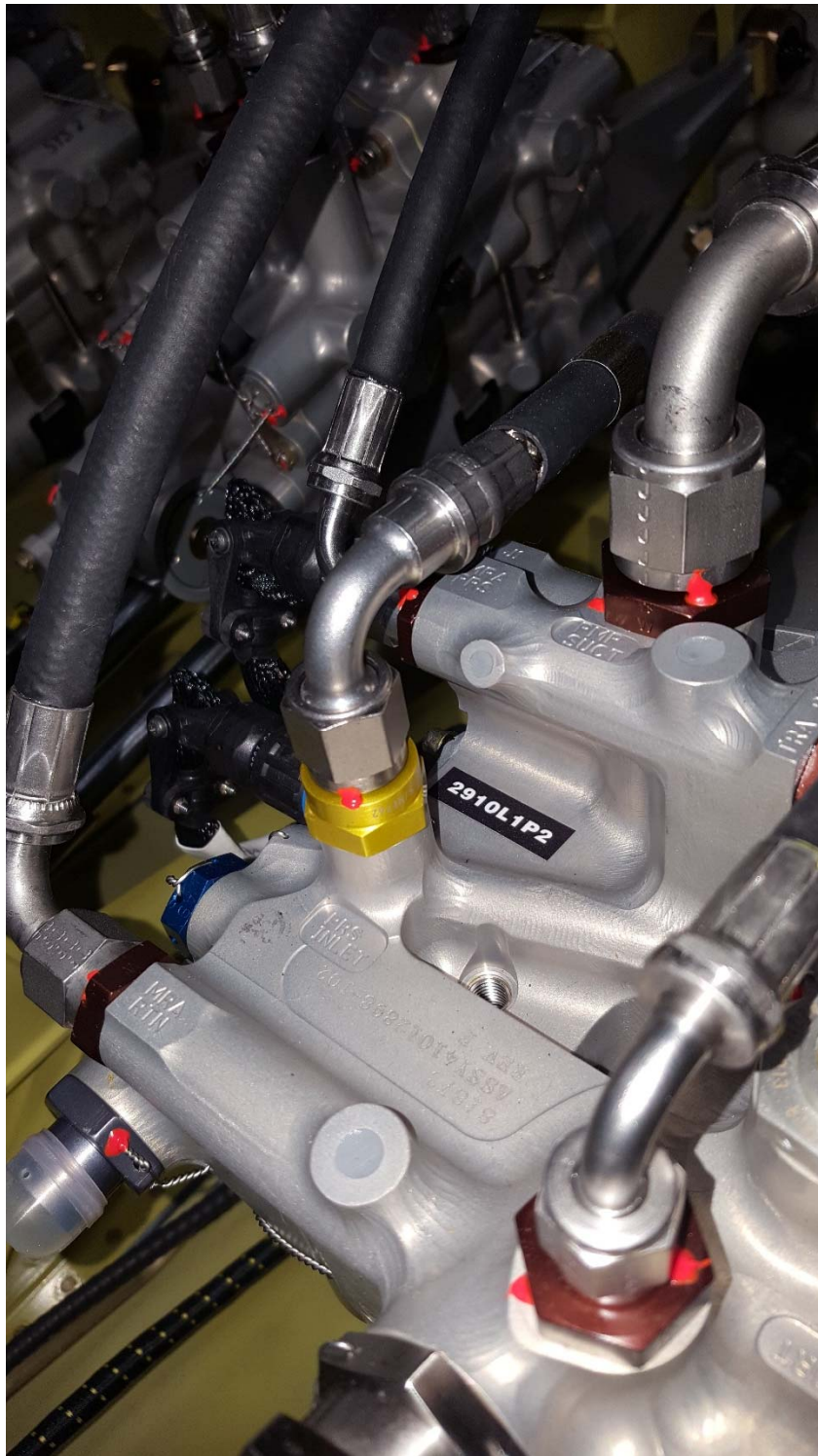
VIEW A



J2 and J1 identification mark

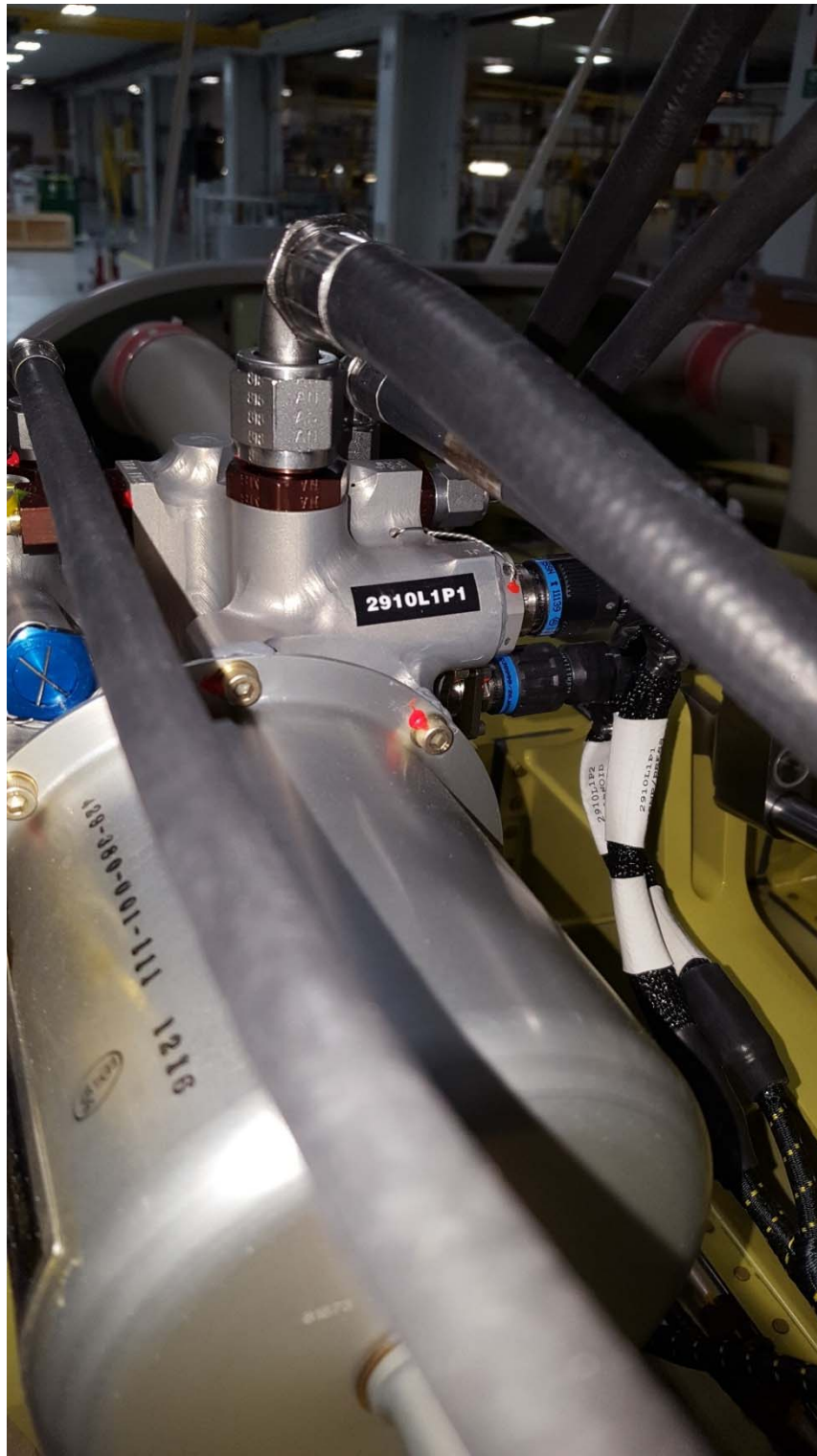
VIEW A (Close up view)

Figure 1 – IHM Identification Mark (Sheet 2 of 2)



2910L1P2 decal location

Figure 2 – IHM Connector Decal Location system #1 (Sheet 1 of 2)

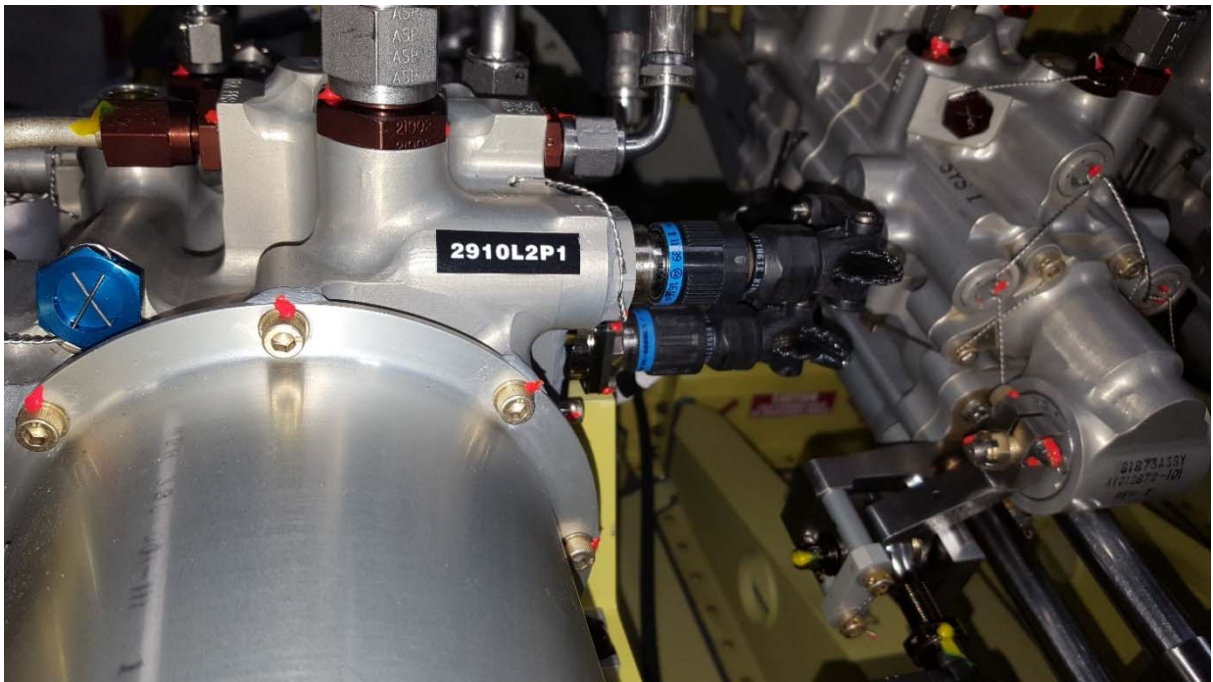


2910L1P1 decal location

Figure 2 – IHM Connector Decal Location system #1 (Sheet 2 of 2)



2910L2P2 decal location



2910L2P1 decal location

Figure 3 – IHM Connector Decal Location system #2